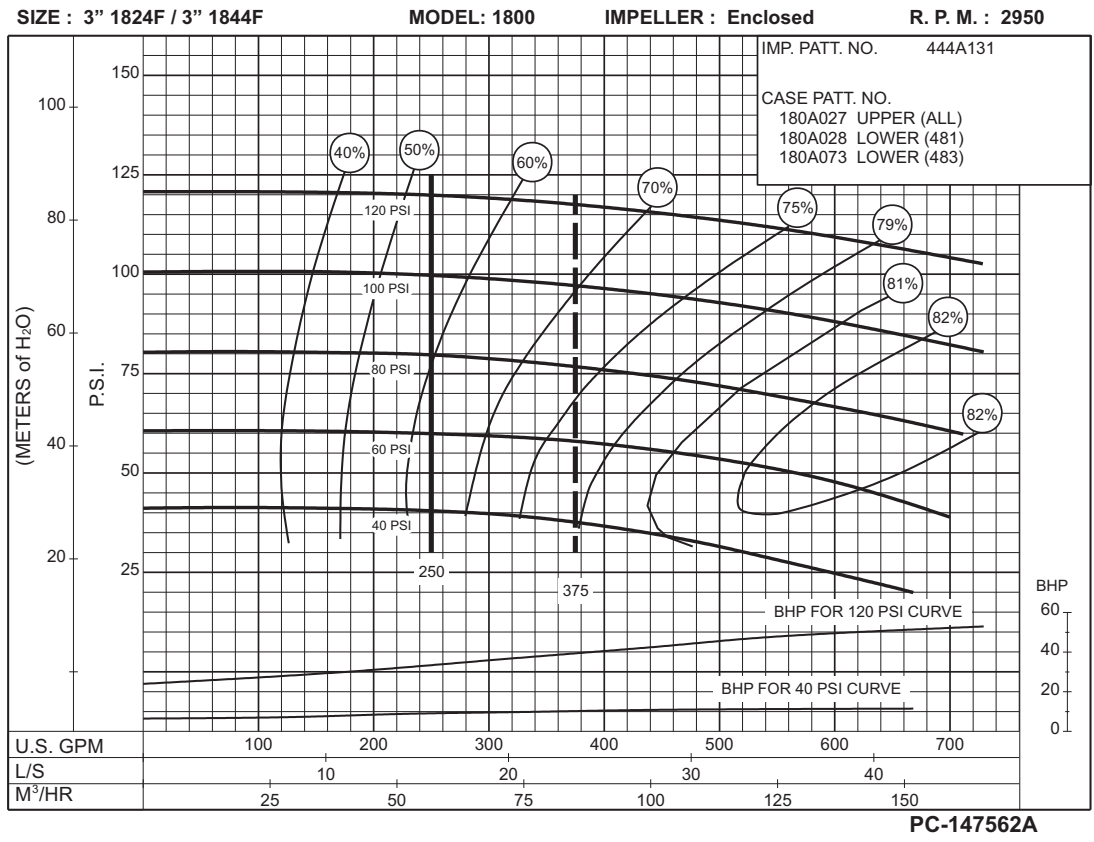
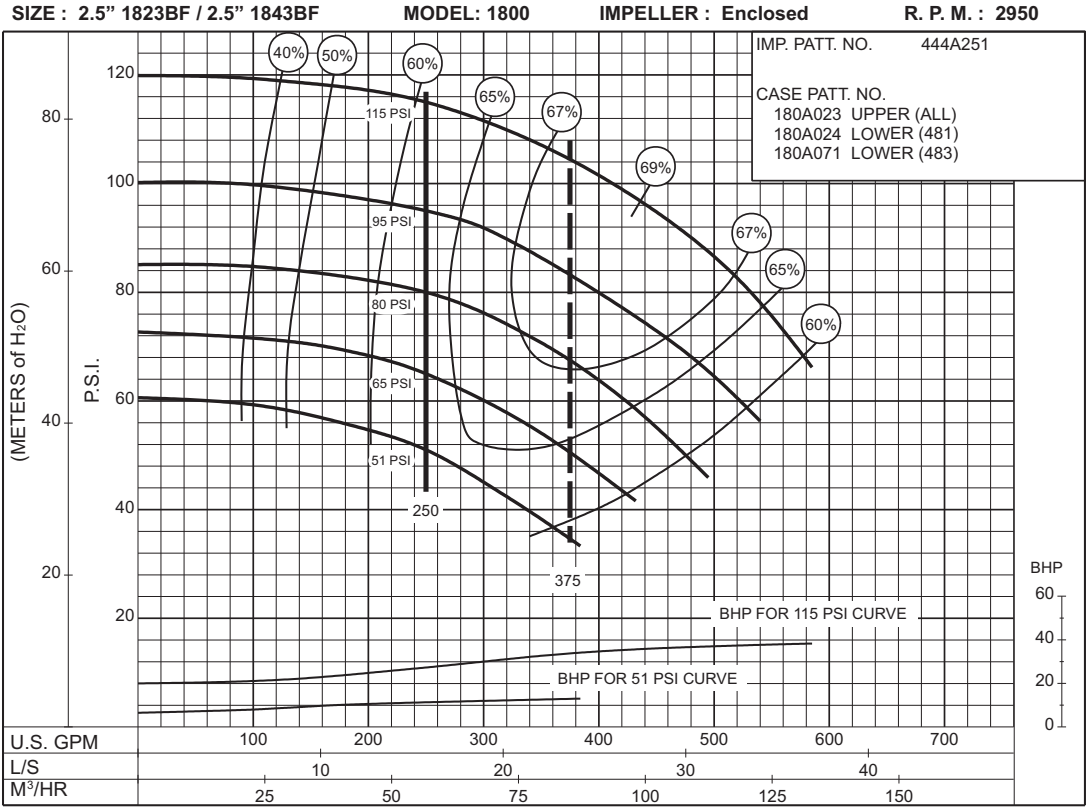
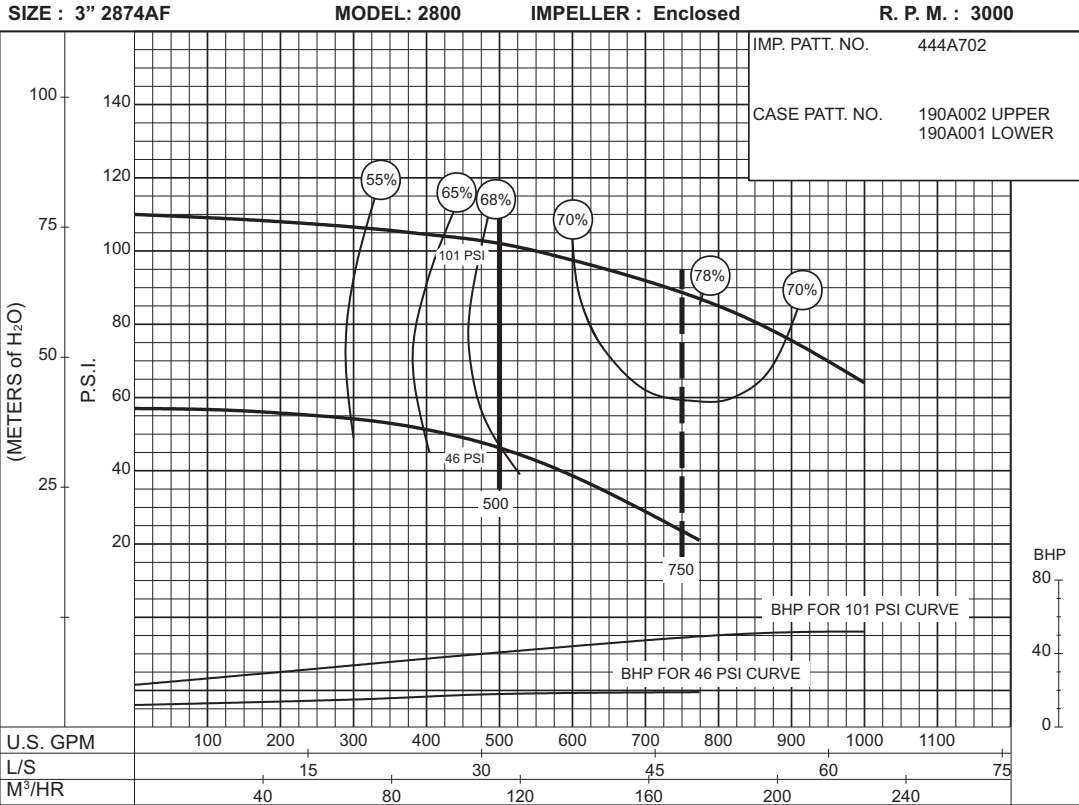


250 G.P.M. 912 SERIES

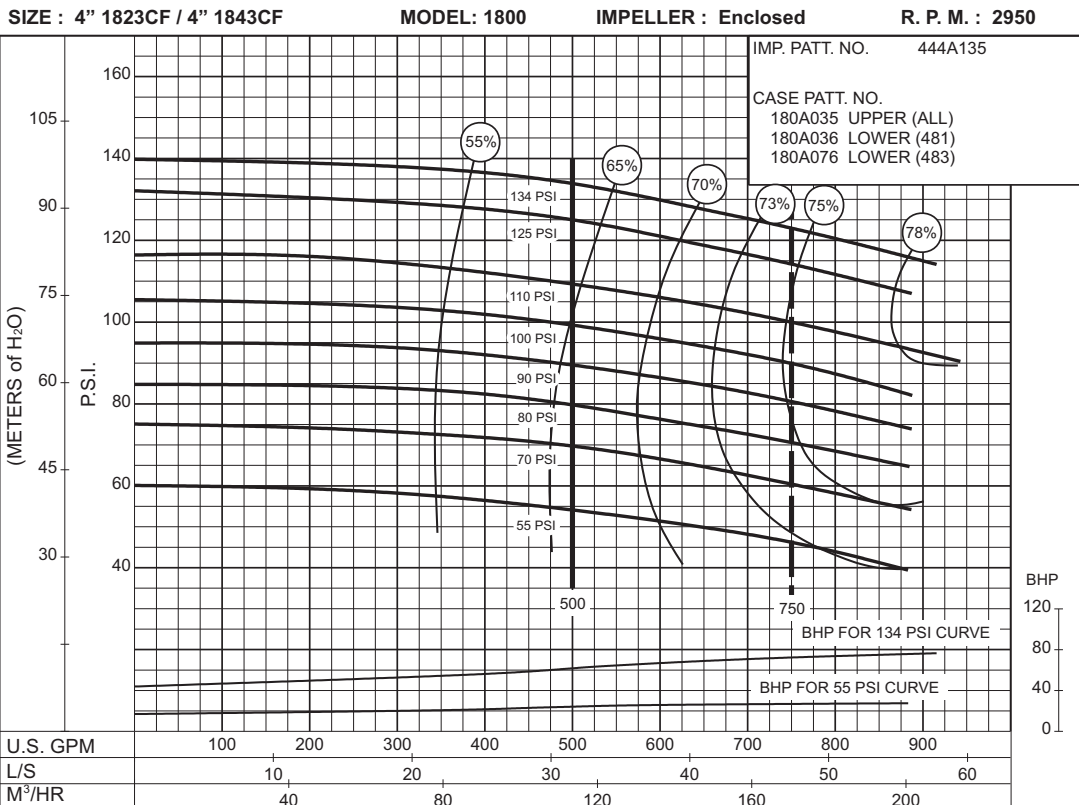
50 HERTZ ELECTRIC MOTOR DRIVE



500 G.P.M. 912 SERIES
 ELECTRIC MOTOR DRIVE



**46
to
101
P.S.I.**



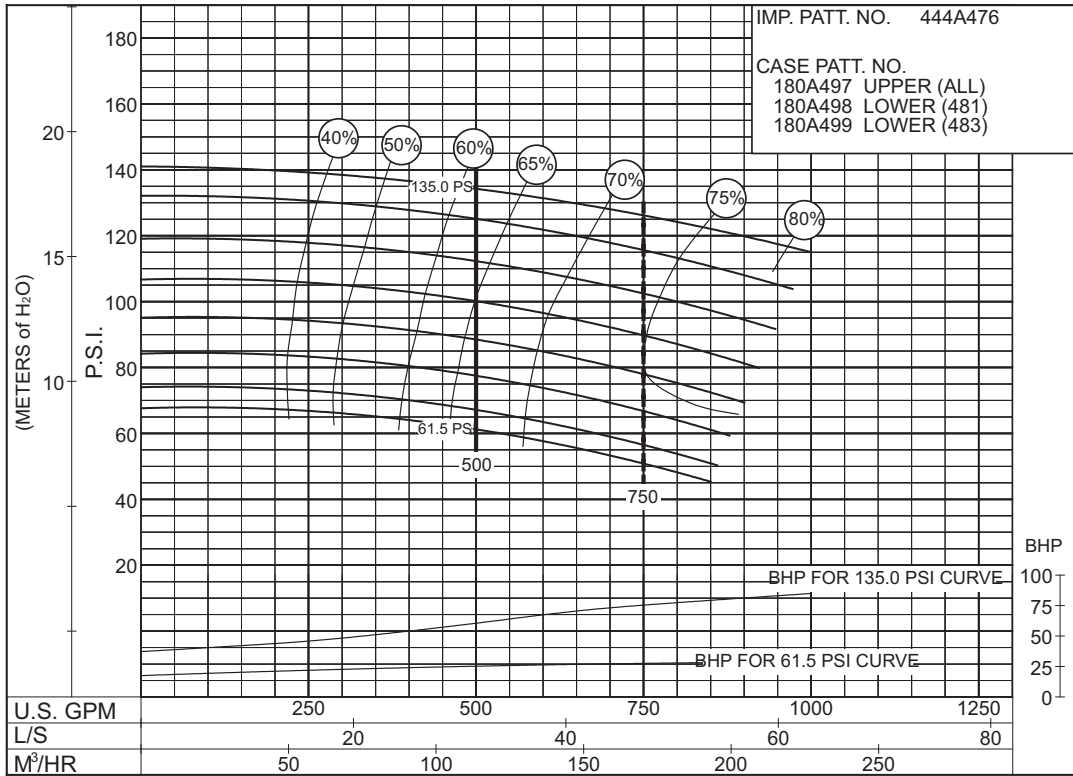
**55
to
134
P.S.I.**

500 G.P.M. 912 SERIES

50 HERTZ ELECTRIC MOTOR DRIVE

Section **912** Page **603**
 Date **June 2013**
 Supersedes **June 2007**

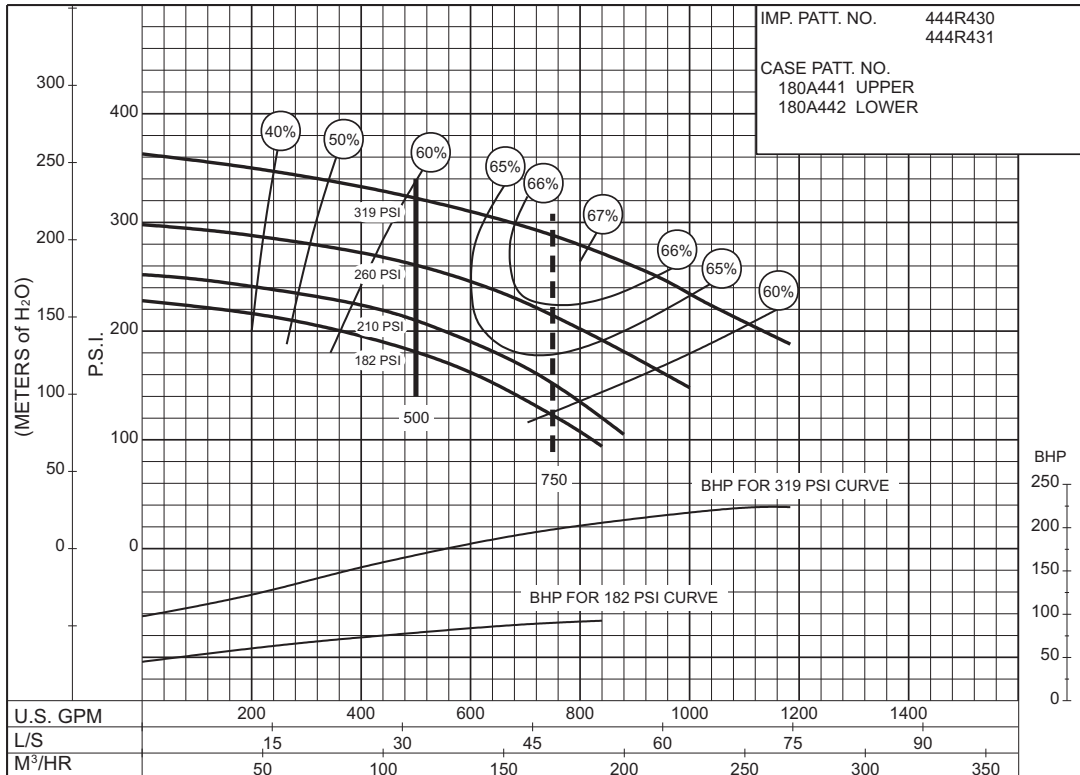
SIZE : 4"1823DF MODEL: 1800 IMPELLER : Enclosed R. P. M. : 2950



PC-193678

61 to 134 P.S.I.

SIZE : 5" 1924F MODEL: 1900 IMPELLER : Enclosed R. P. M. : 2950



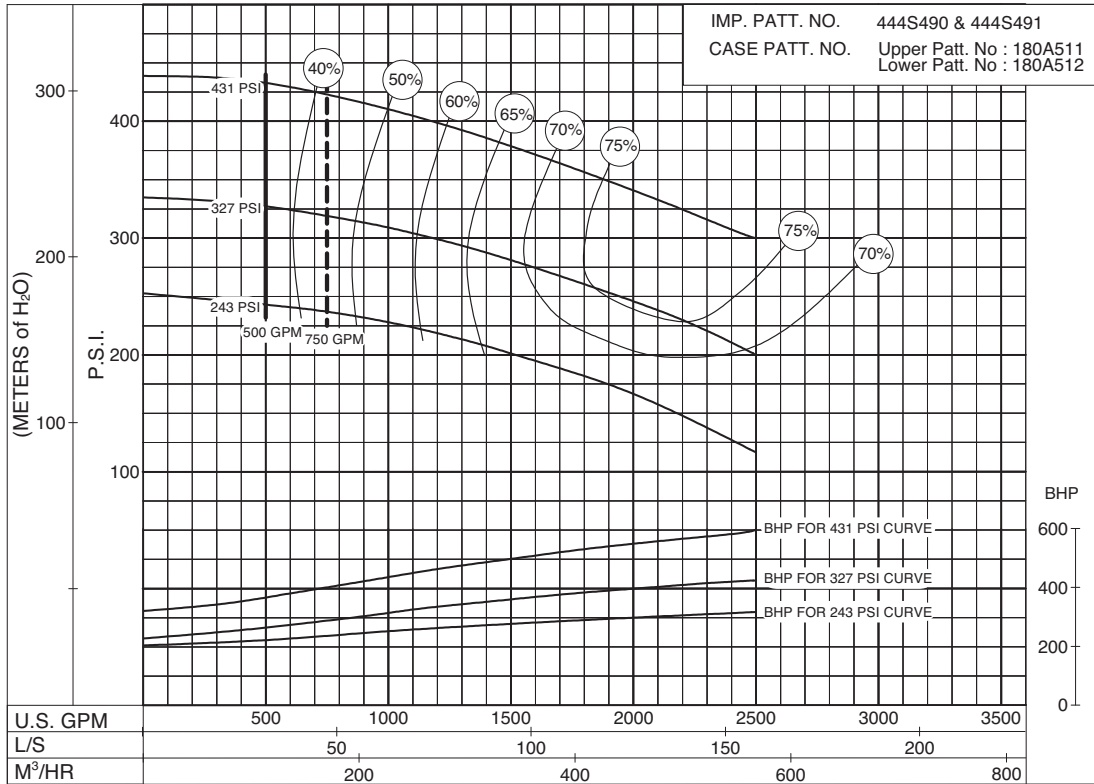
PC-174443

180 to 320 P.S.I.

500 G.P.M. 912 SERIES
 50 HERTZ ELECTRIC MOTOR DRIVE

SIZE: 6"-1923F MODEL: 1900 IMPELLER : Enclosed R. P. M. : 2950

IMP. PATT. NO. 444S490 & 444S491
 CASE PATT. NO. Upper Patt. No : 180A511
 Lower Patt. No : 180A512



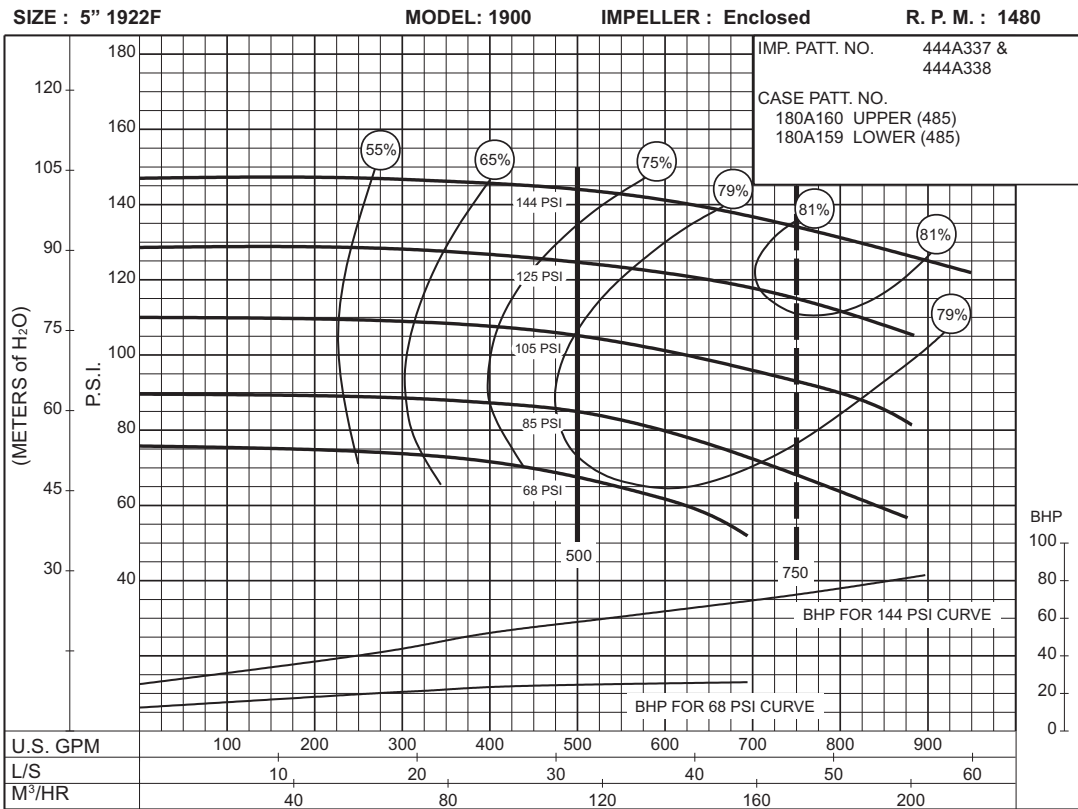
**243
to
431
P.S.I.**

PC-201248

THIS PAGE LEFT INTENTIONALLY BLANK

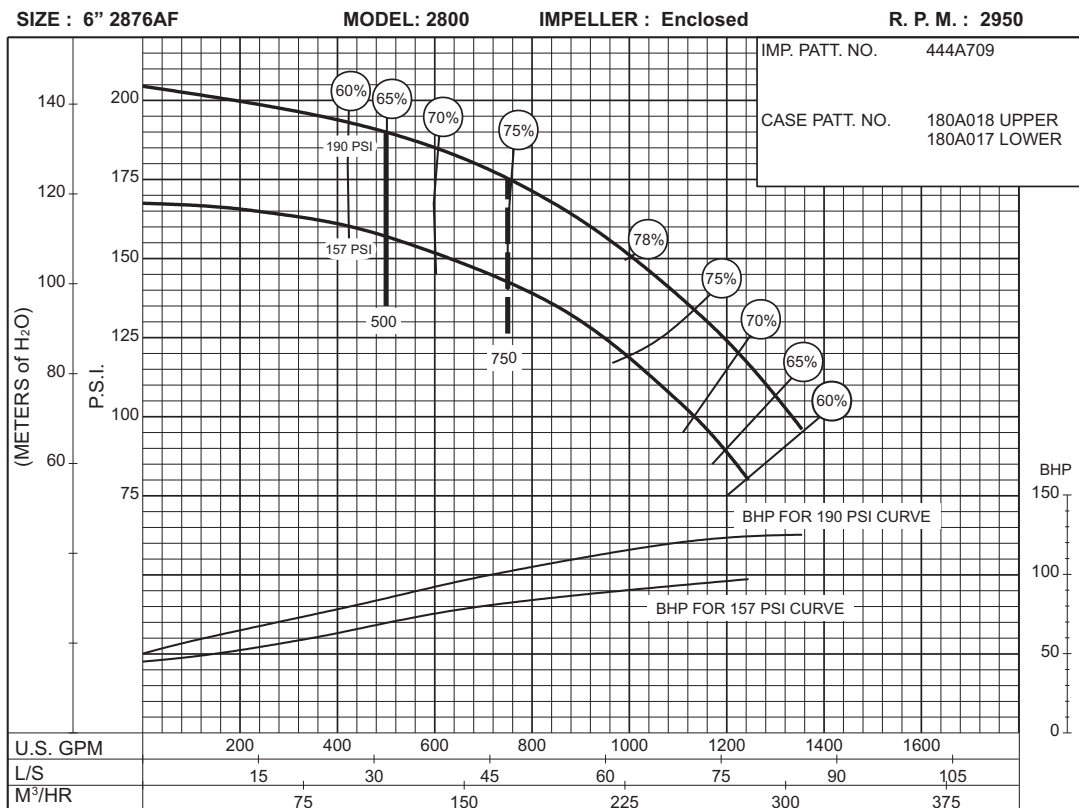
500 G.P.M. 912 SERIES
 50 HERTZ ELECTRIC MOTOR DRIVE

**68
to
144
P.S.I.**



PC-147566A

**157
to
190
P.S.I.**

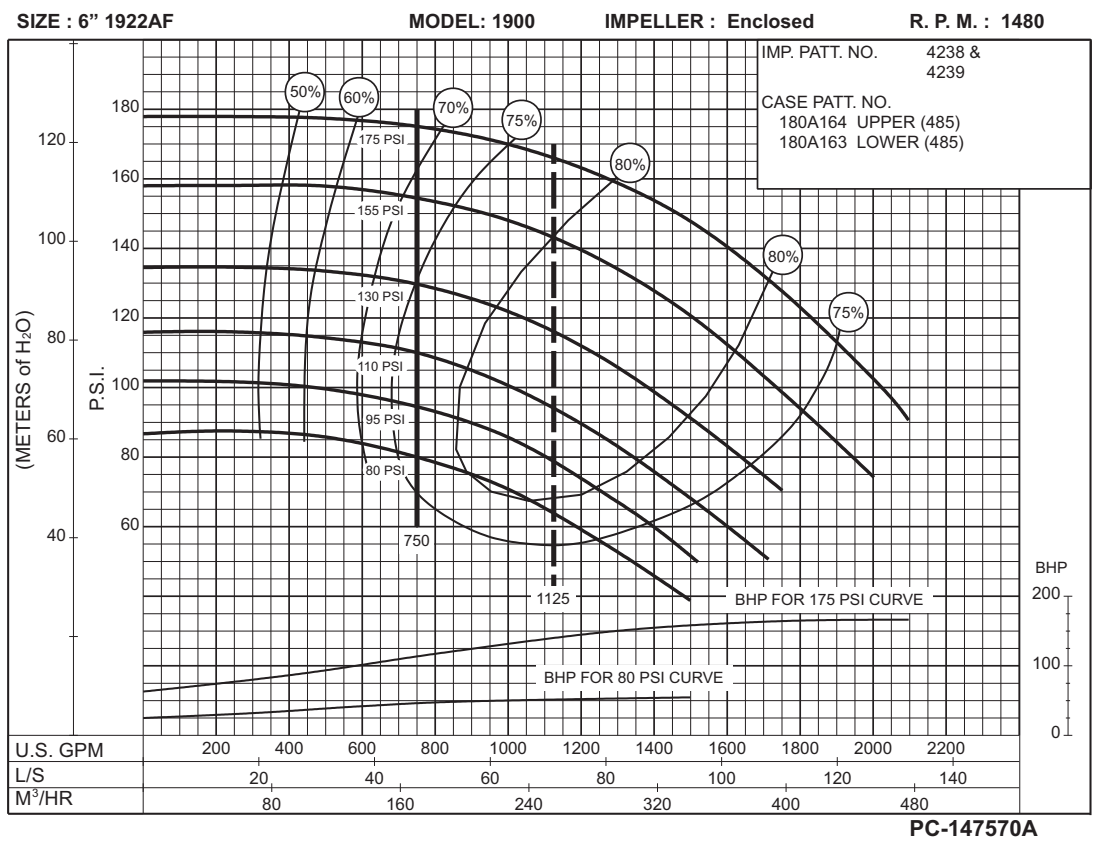
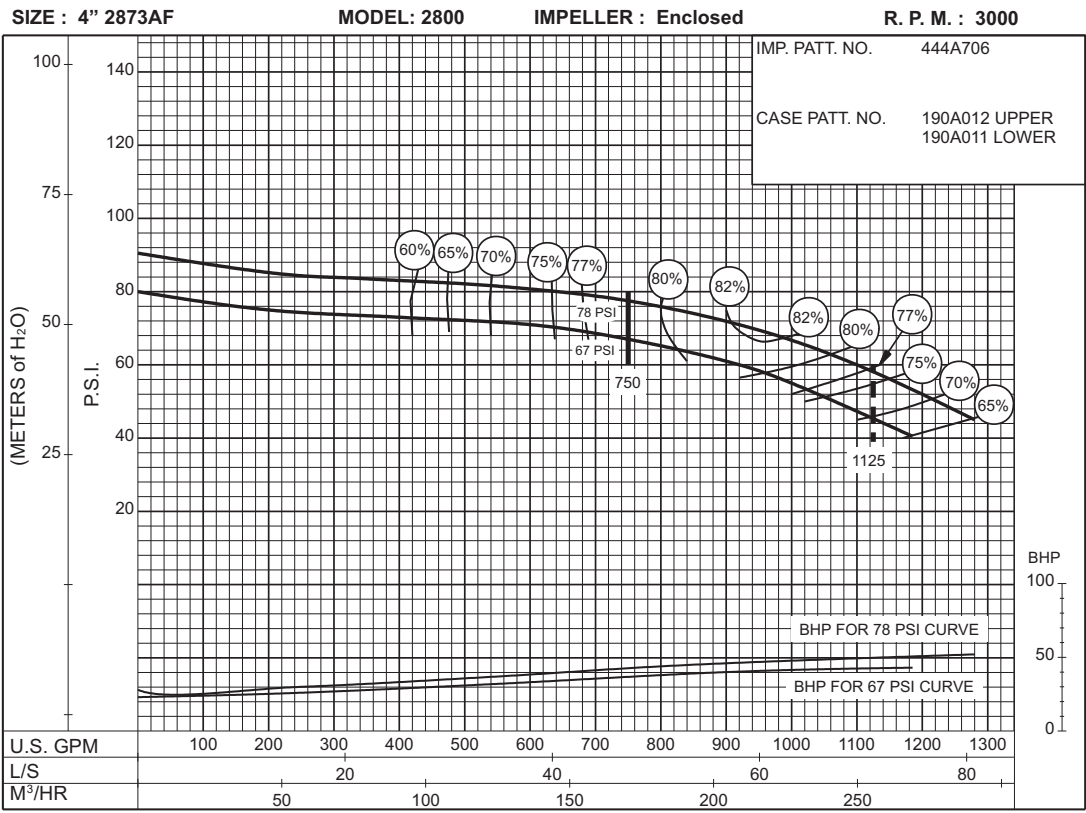


PC-171332

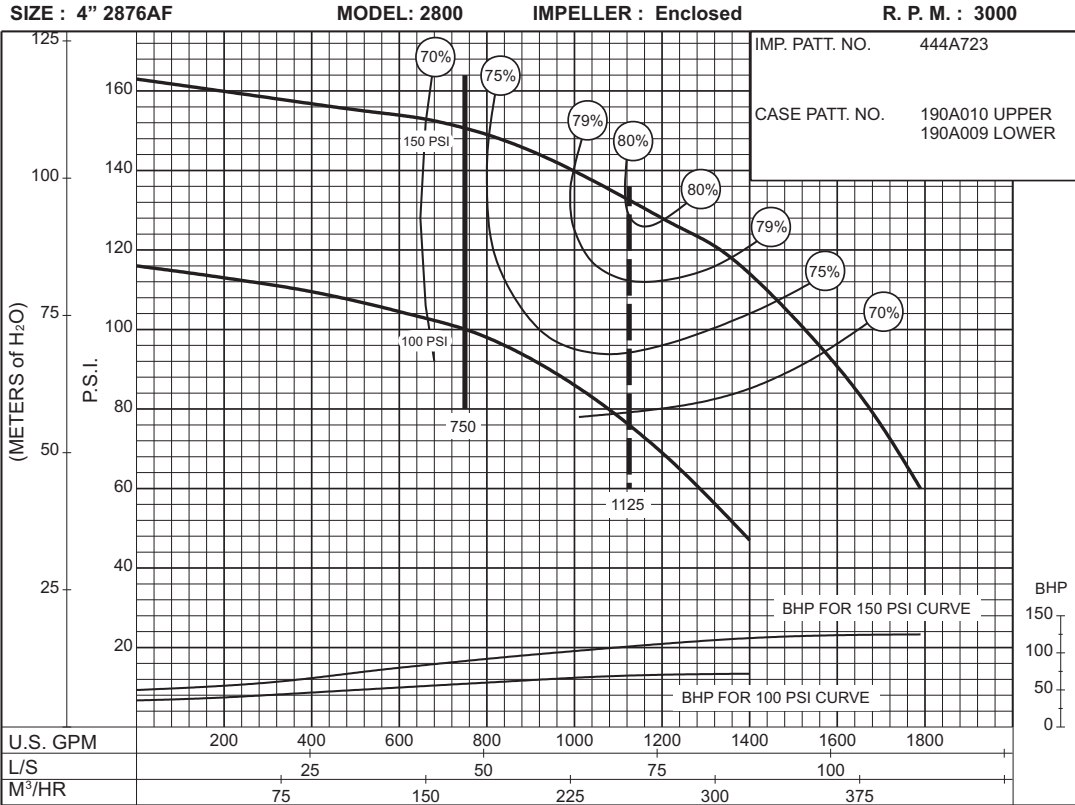
750 G.P.M. 912 SERIES

50 HERTZ ELECTRIC MOTOR DRIVE

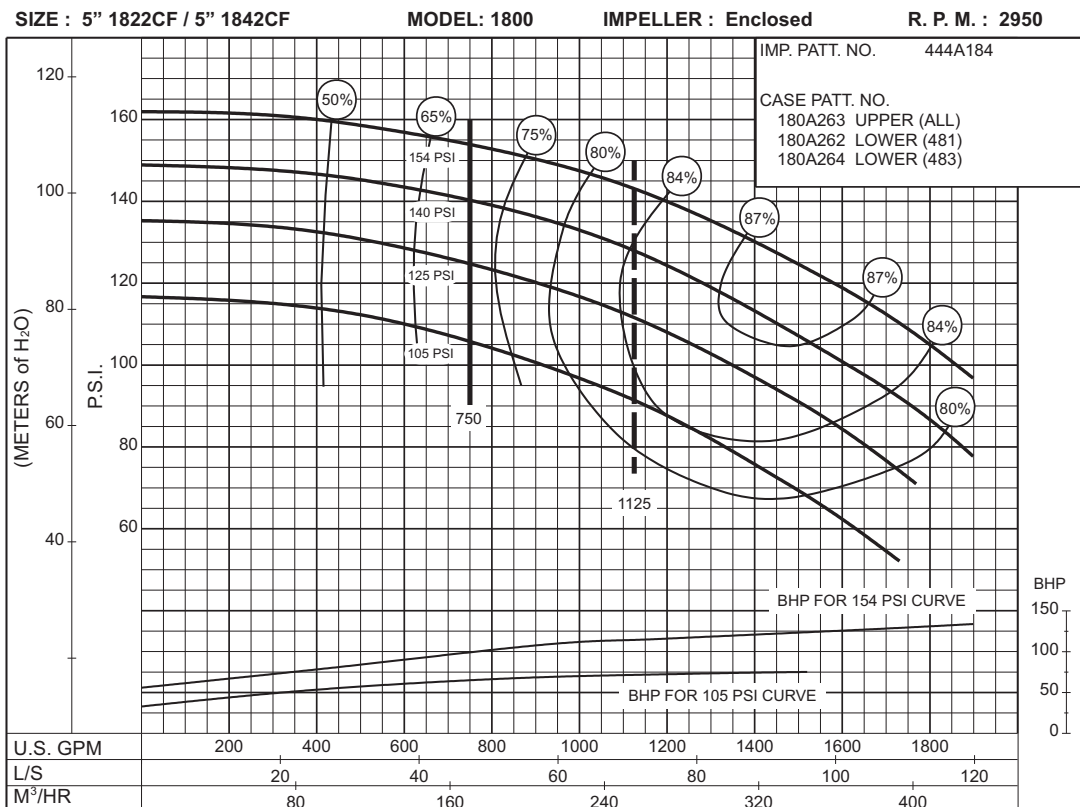
Section **912** Page **605**
 Date **June 2013**
 Supersedes **April 2006**



750 G.P.M. 912 SERIES
 50 HERTZ ELECTRIC MOTOR DRIVE



PC-171334

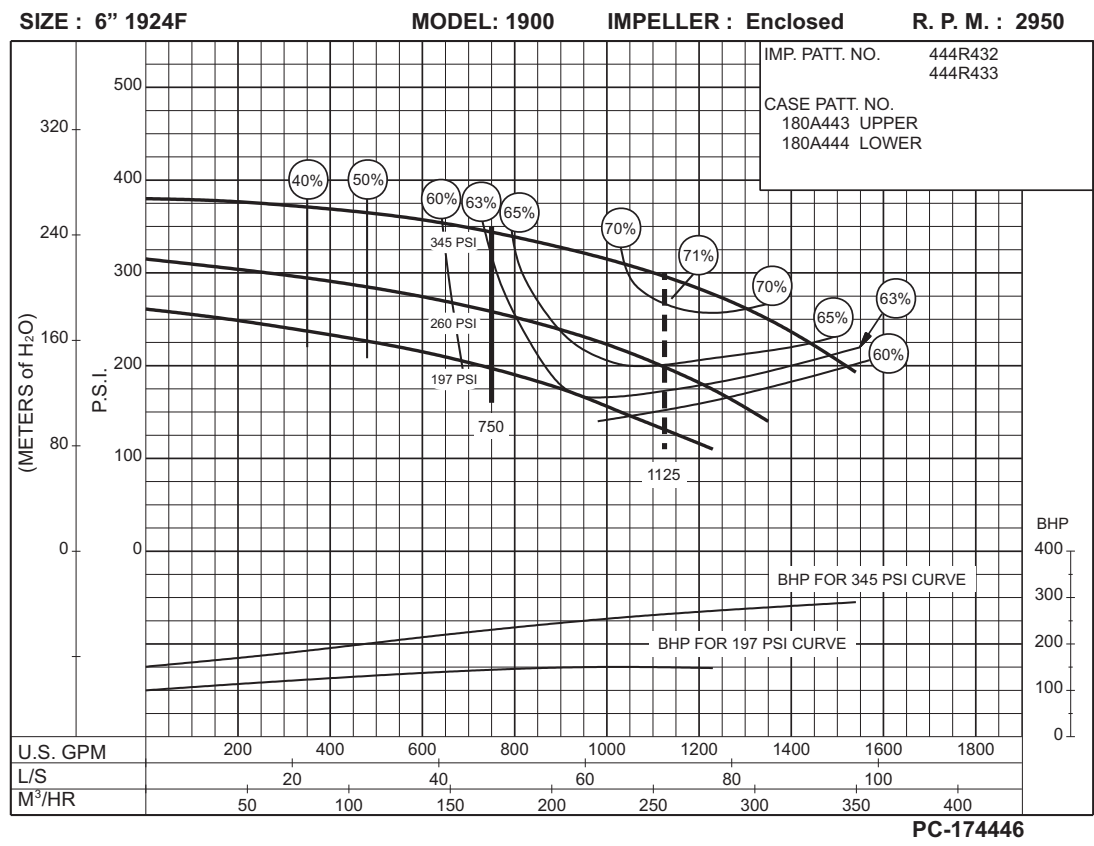
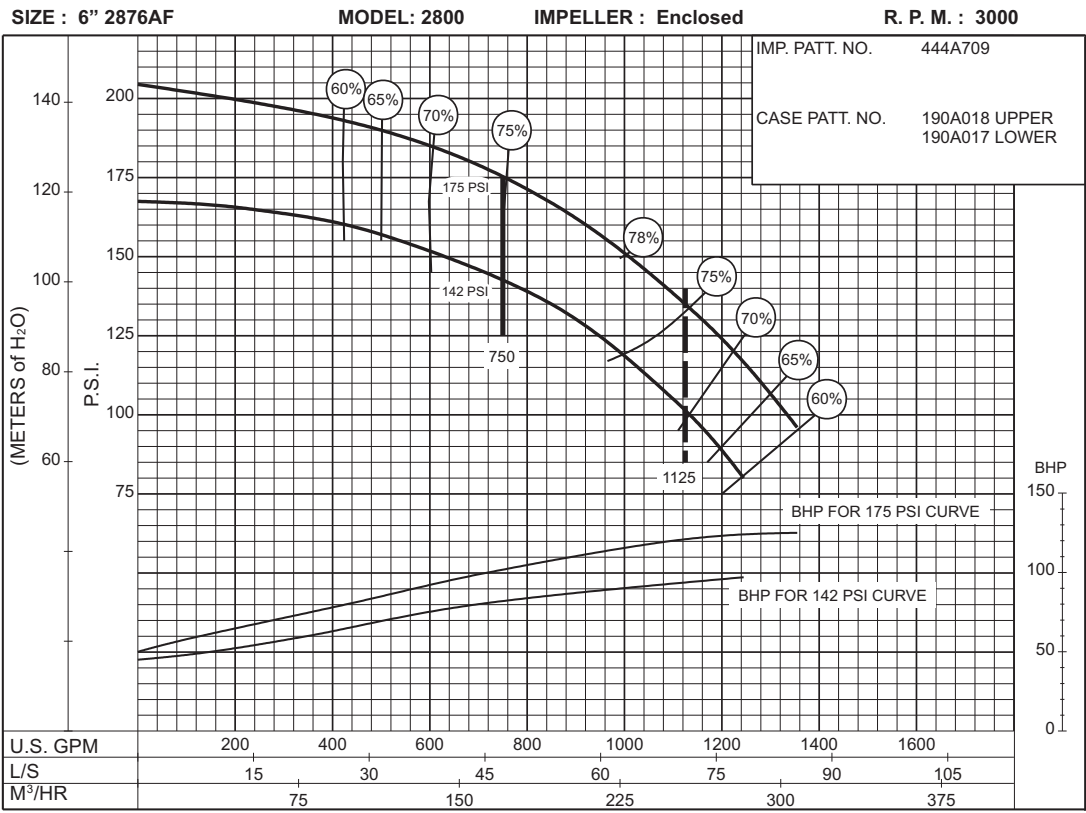


PC-147568A

750 G.P.M. 912 SERIES

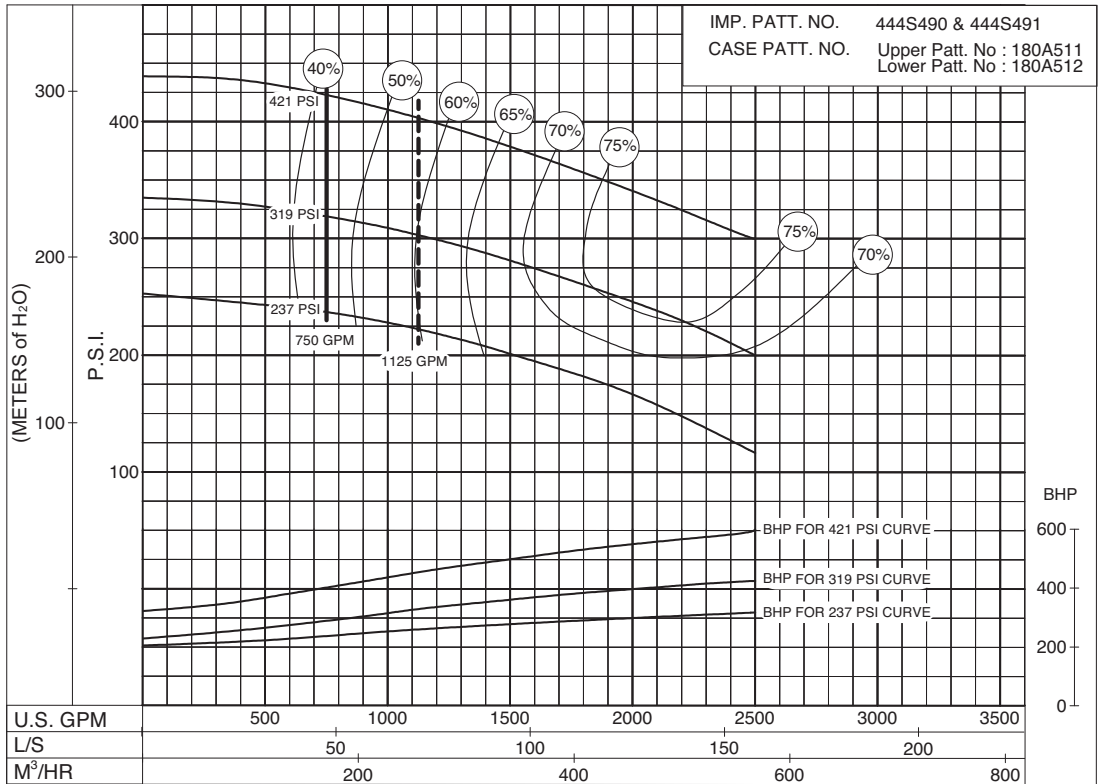
50 HERTZ ELECTRIC MOTOR DRIVE

Section **912** Page **607**
 Date **June 2013**
 Supersedes **June 2007**



750 G.P.M. 912 SERIES
 50 HERTZ ELECTRIC MOTOR DRIVE

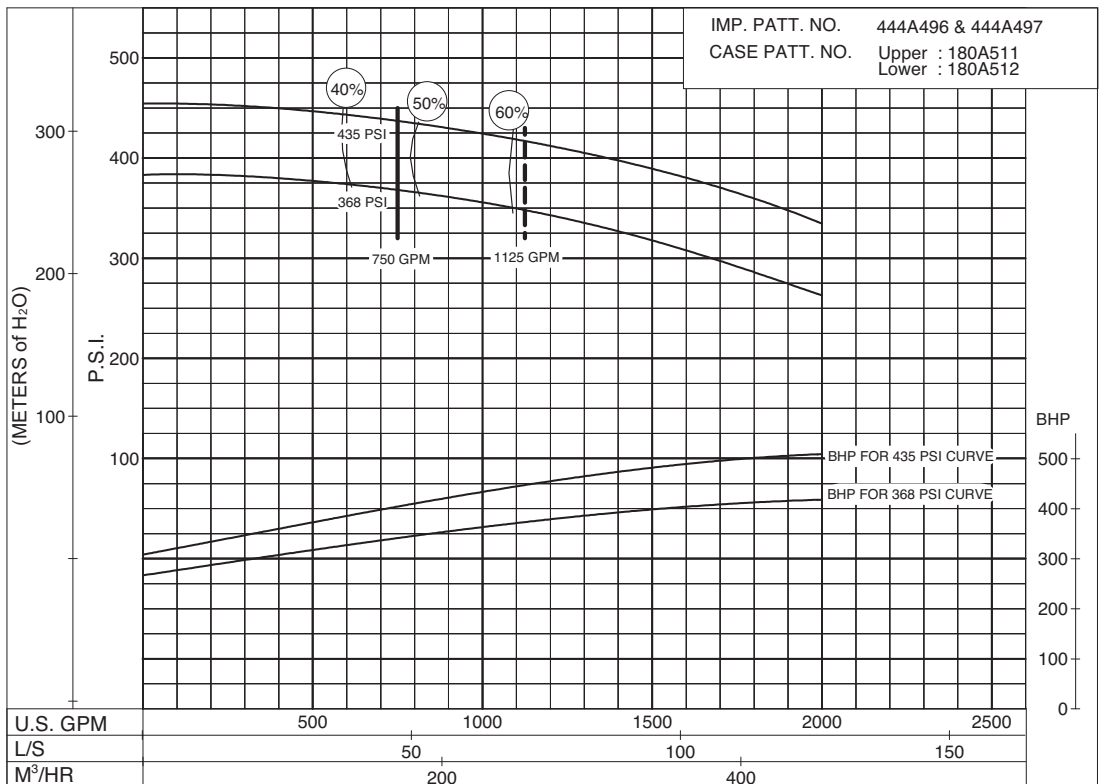
SIZE: 6"-1923F MODEL: 1900 IMPELLER : Enclosed R. P. M. : 2950



**237
to
421
P.S.I.**

PC-200268A

SIZE: 6"-1923BF MODEL: 1900 IMPELLER : Enclosed R. P. M. : 2950



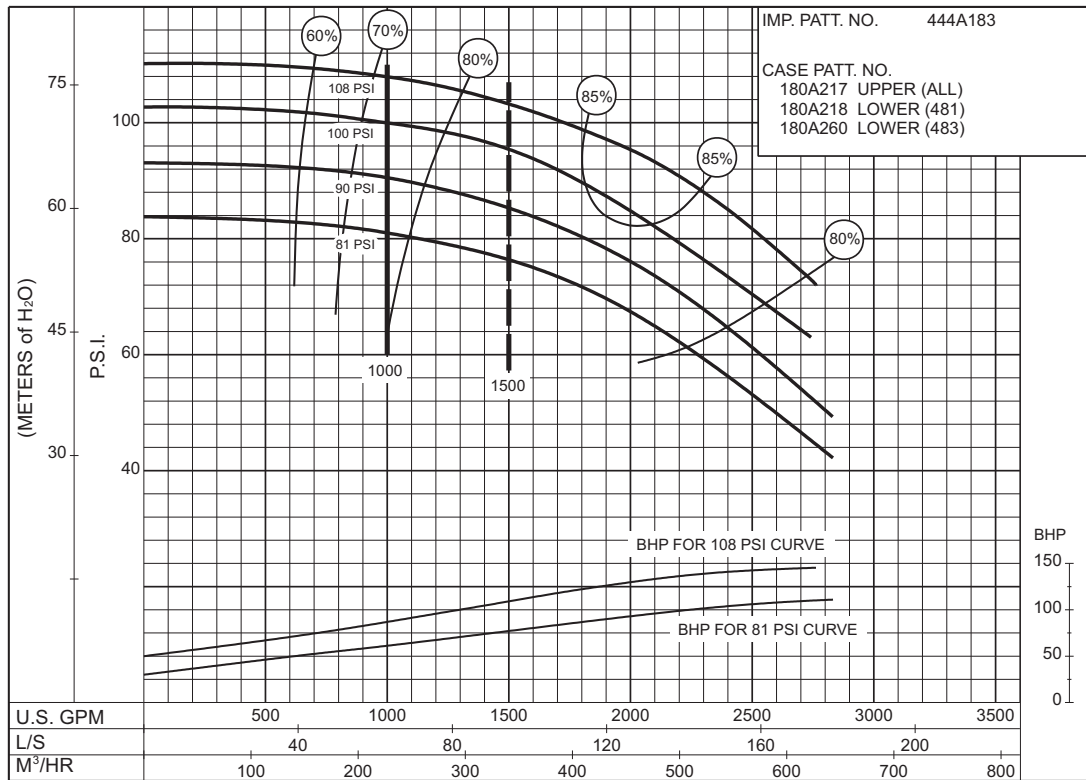
**368
to
435
P.S.I.**

PC-204637

THIS PAGE LEFT INTENTIONALLY BLANK

1000 G.P.M. 912 SERIES
 50 HERTZ ELECTRIC MOTOR DRIVE

SIZE : 6" 1824CF / 6" 1844CF MODEL: 1800 IMPELLER : Enclosed R. P. M. : 1480



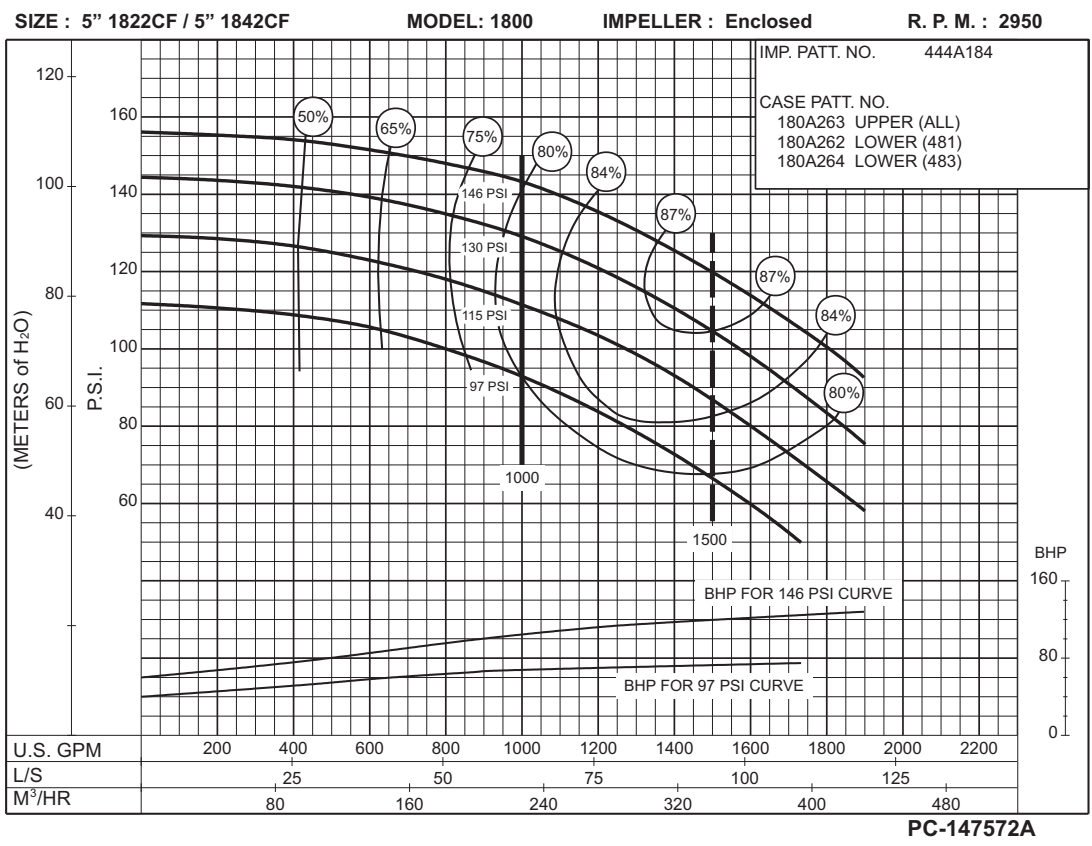
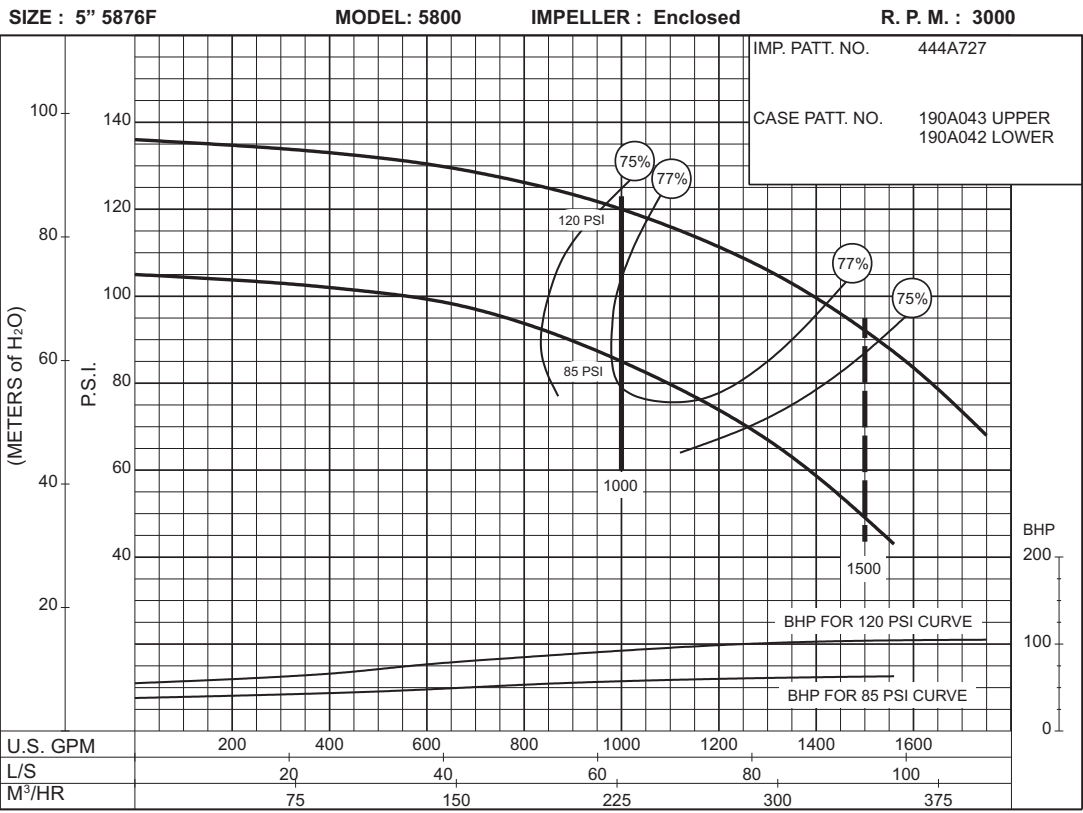
**81
to
108
P.S.I.**

PC-147574A

1000 G.P.M. 912 SERIES

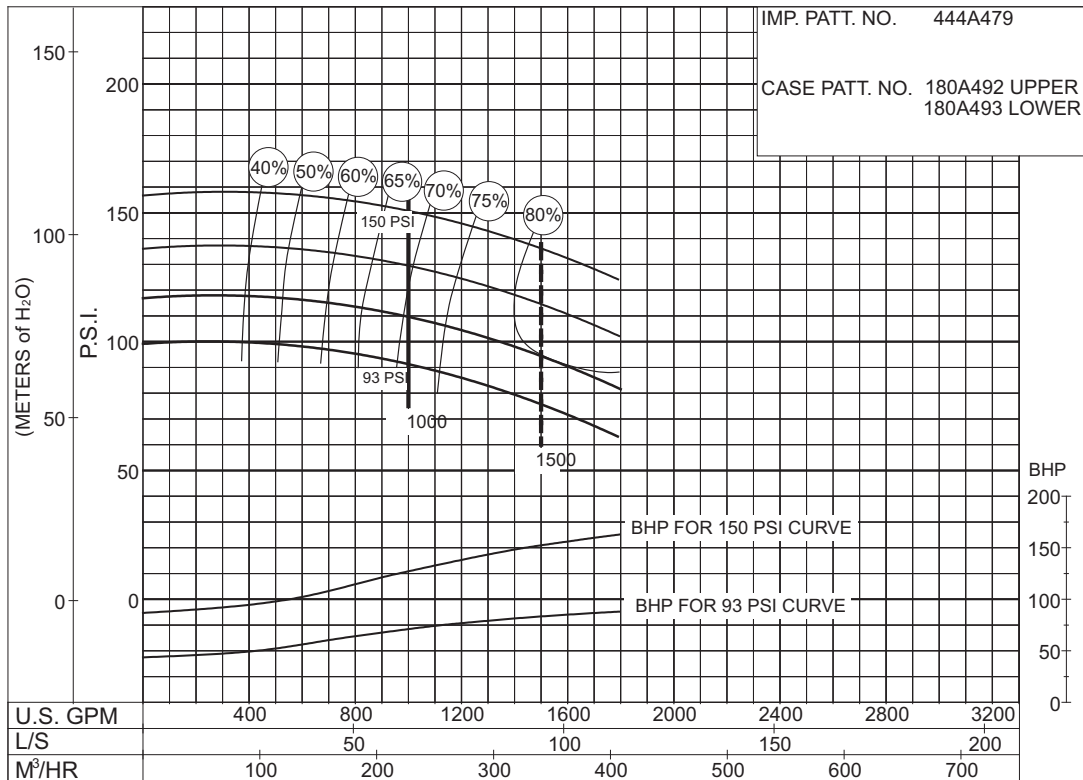
50 HERTZ ELECTRIC MOTOR DRIVE

Section **912** Page **609**
 Date **June 2013**
 Supersedes **April 2006**



1000 G.P.M. 912 SERIES
 50 HERTZ ELECTRIC MOTOR DRIVE

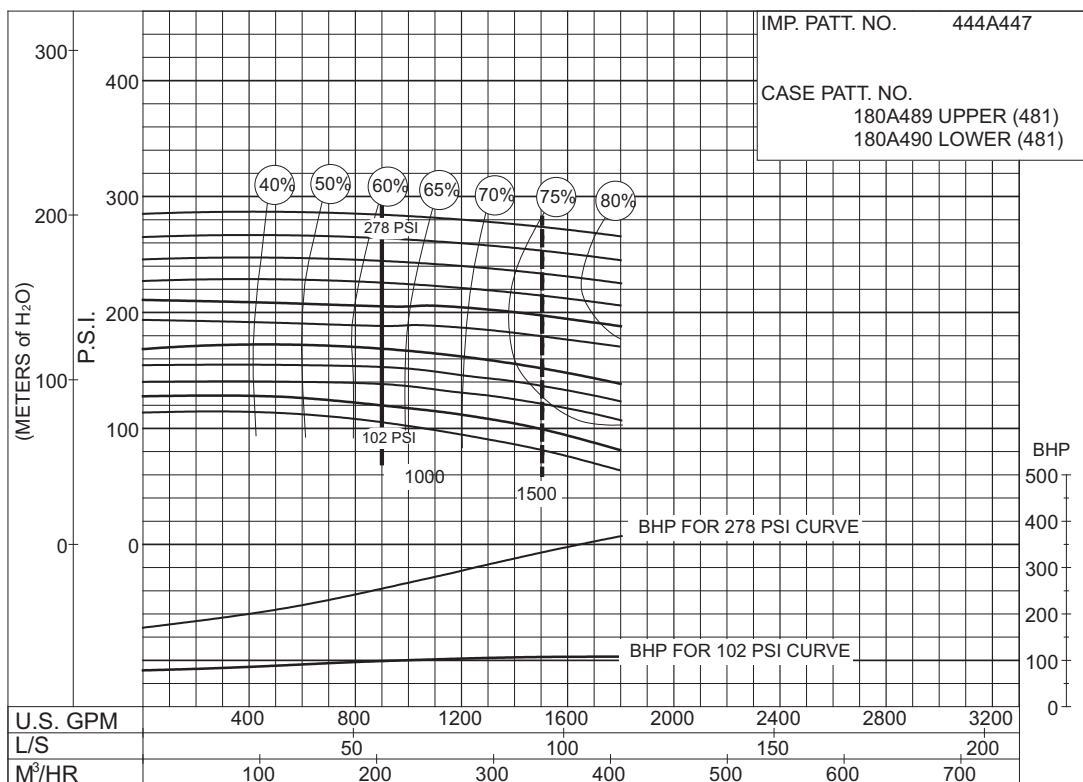
SIZE : 6" 1822HHF MODEL: 1800 IMPELLER : Enclosed R. P. M. : 2950



**93
to
150
P.S.I.**

PC - 186052

SIZE : 6" 1823HHF MODEL: 1800 IMPELLER : Enclosed R. P. M. : 2950



**102
to
278
P.S.I.**

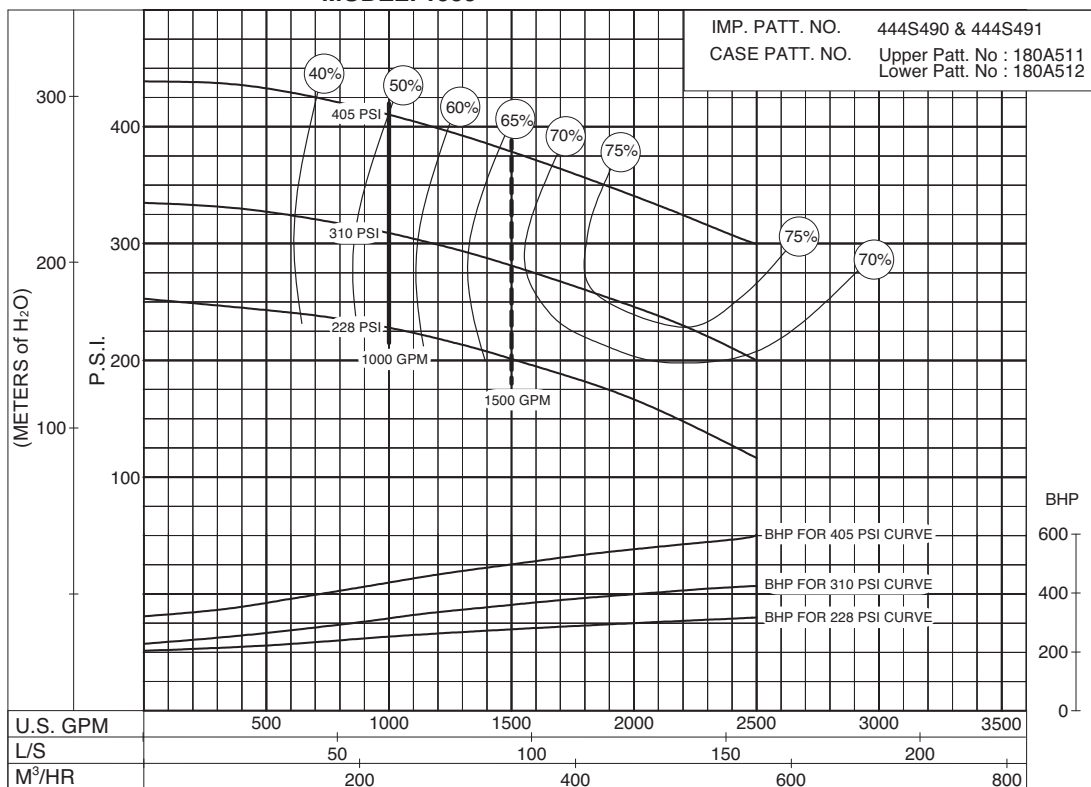
PC - 185611

1000 G.P.M. 912 SERIES

50 HERTZ ELECTRIC MOTOR DRIVE

Section **912** Page **610.1**
 Date **June 2013**
 Supersedes **October 2011**

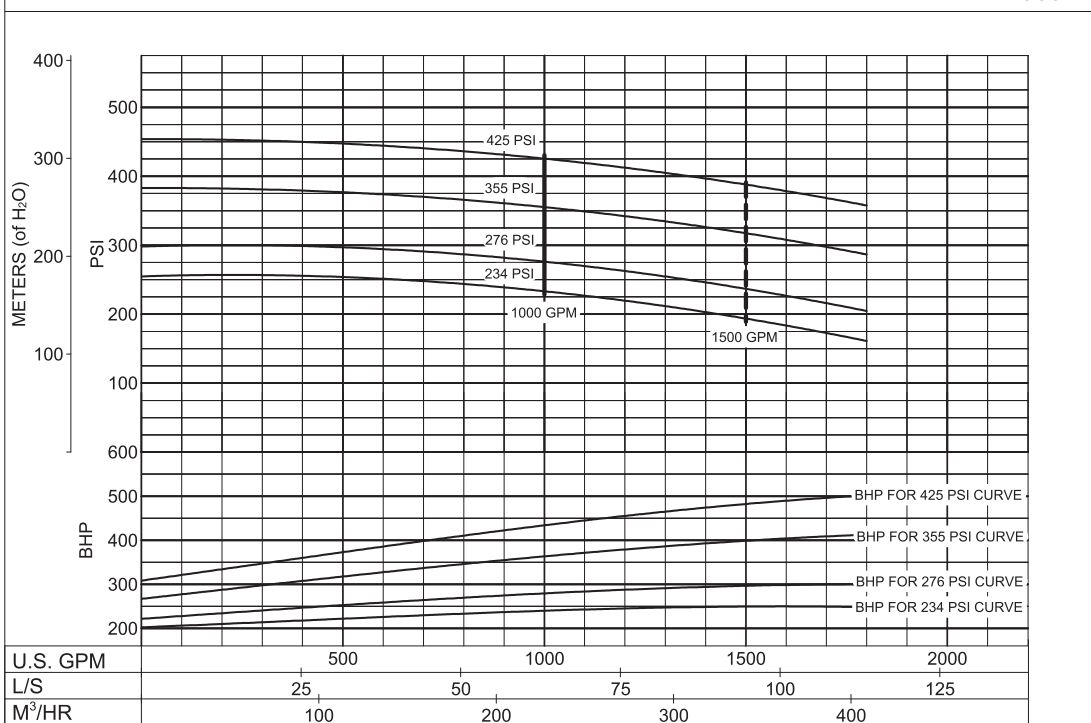
SIZE: 6"-1923F MODEL: 1900 IMPELLER : Enclosed R. P. M. : 2950



PC-200269A

228 to 405 P.S.I.

SIZE: 6"-1923BF MODEL: 1900 IMPELLER: Enclosed RPM: 2950



PC-204638A

234 to 425 P.S.I.

THIS PAGE LEFT INTENTIONALLY BLANK

1250 G.P.M. 912 SERIES

50 HERTZ ELECTRIC MOTOR DRIVE

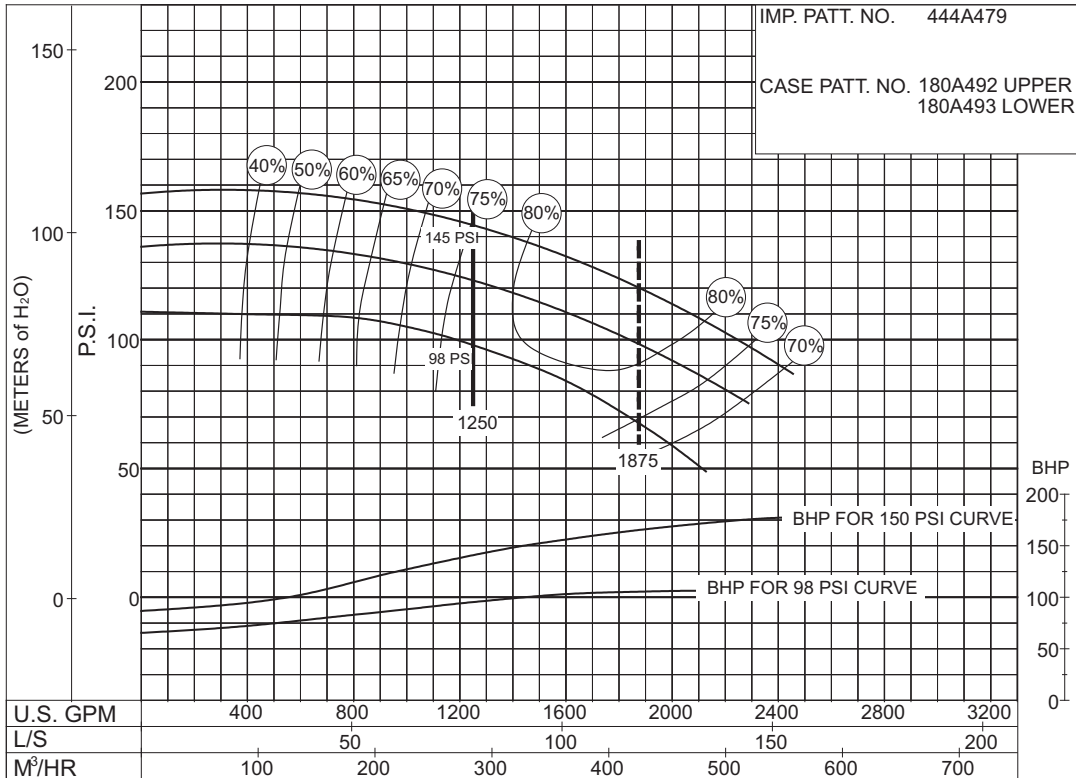
Section **912** Page **611**
 Date **June 2013**
 Supersedes **July 2007**

SIZE : 6" 1822HHF

MODEL: 1800

IMPELLER : Enclosed

R. P. M. : 2950

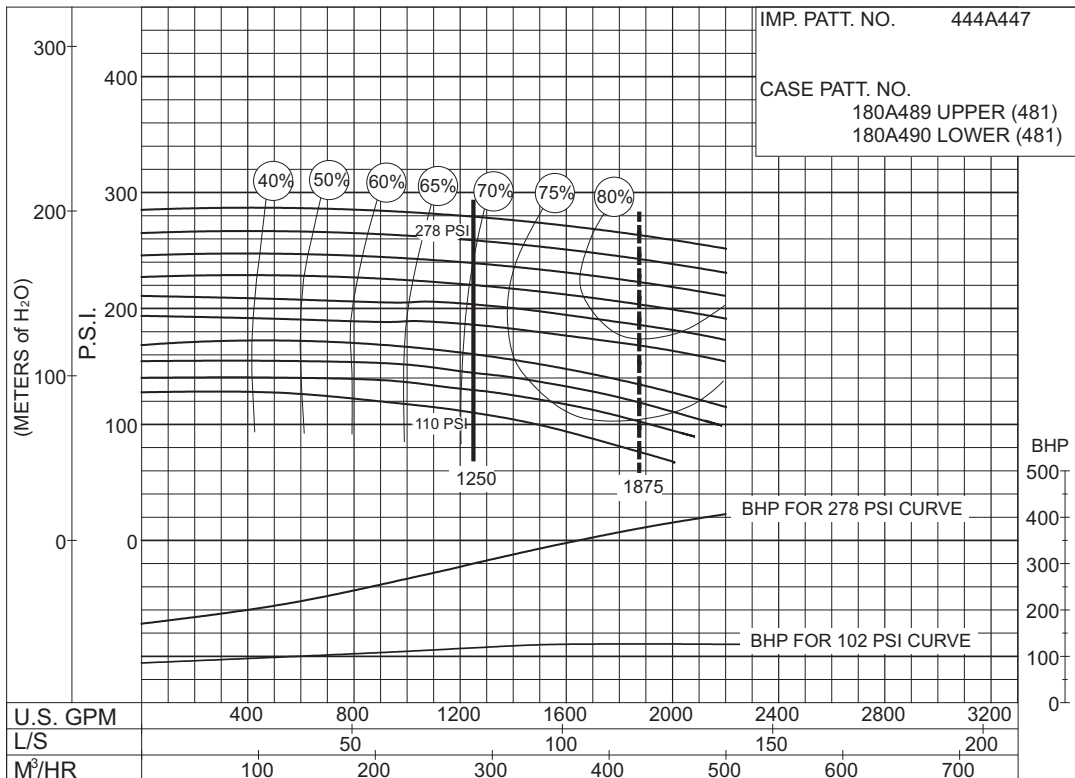


SIZE : 6" 1823HHF

MODEL: 1800

IMPELLER : Enclosed

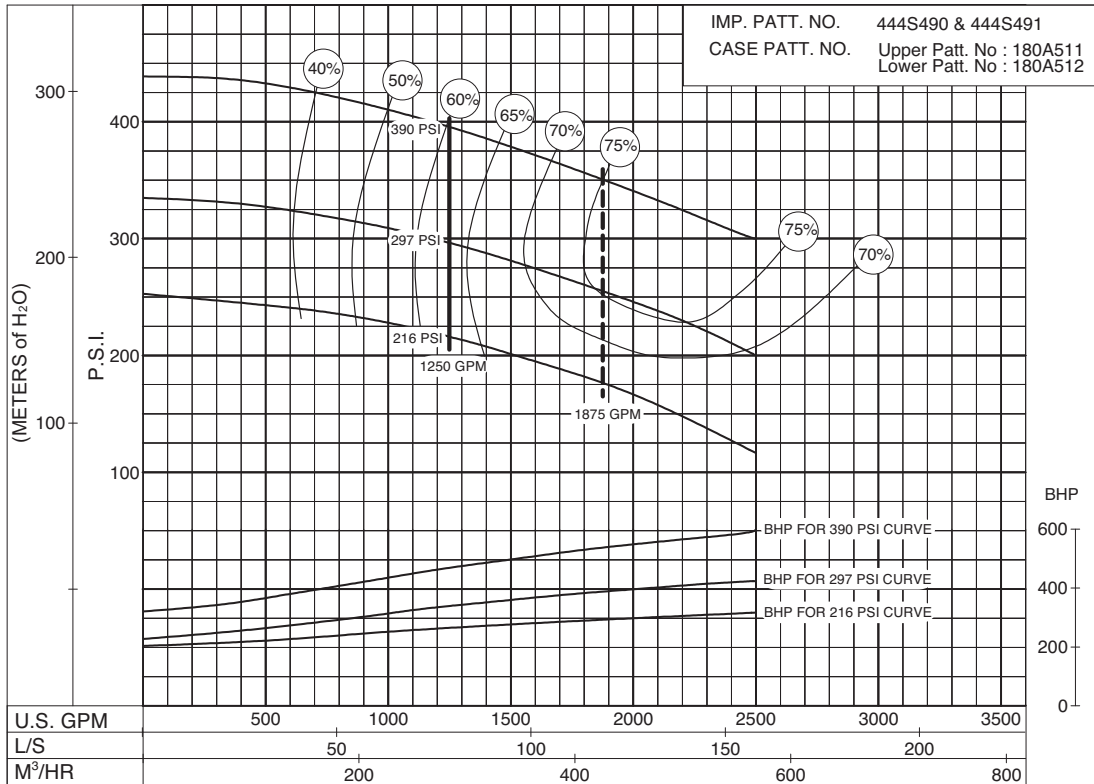
R. P. M. : 2950



1250 G.P.M. 912 SERIES
 50 HERTZ ELECTRIC MOTOR DRIVE

SIZE: 6"-1923F MODEL: 1900 IMPELLER : Enclosed R. P. M. : 2950

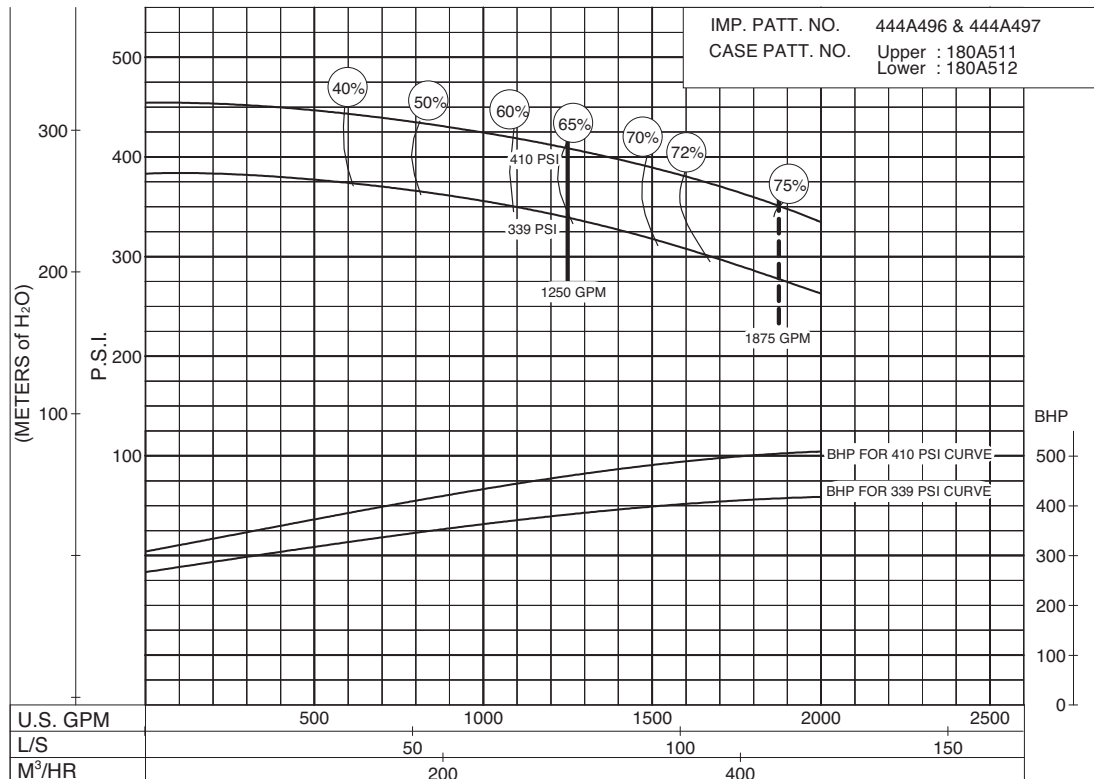
**216
to
390
P.S.I.**



PC-200270A

SIZE: 6"-1923BF MODEL: 1900 IMPELLER : Enclosed R. P. M. : 2950

**339
to
410
P.S.I.**

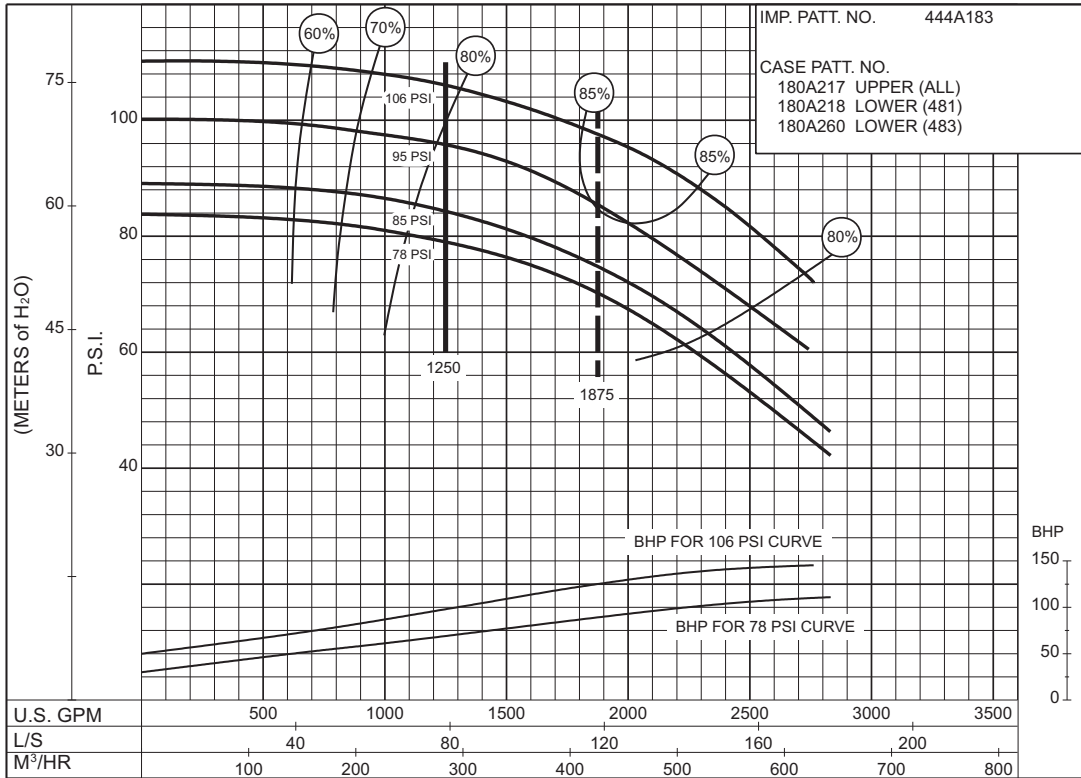


PC-204639

THIS PAGE LEFT INTENTIONALLY BLANK

1250 G.P.M. 912 SERIES
 50 HERTZ ELECTRIC MOTOR DRIVE

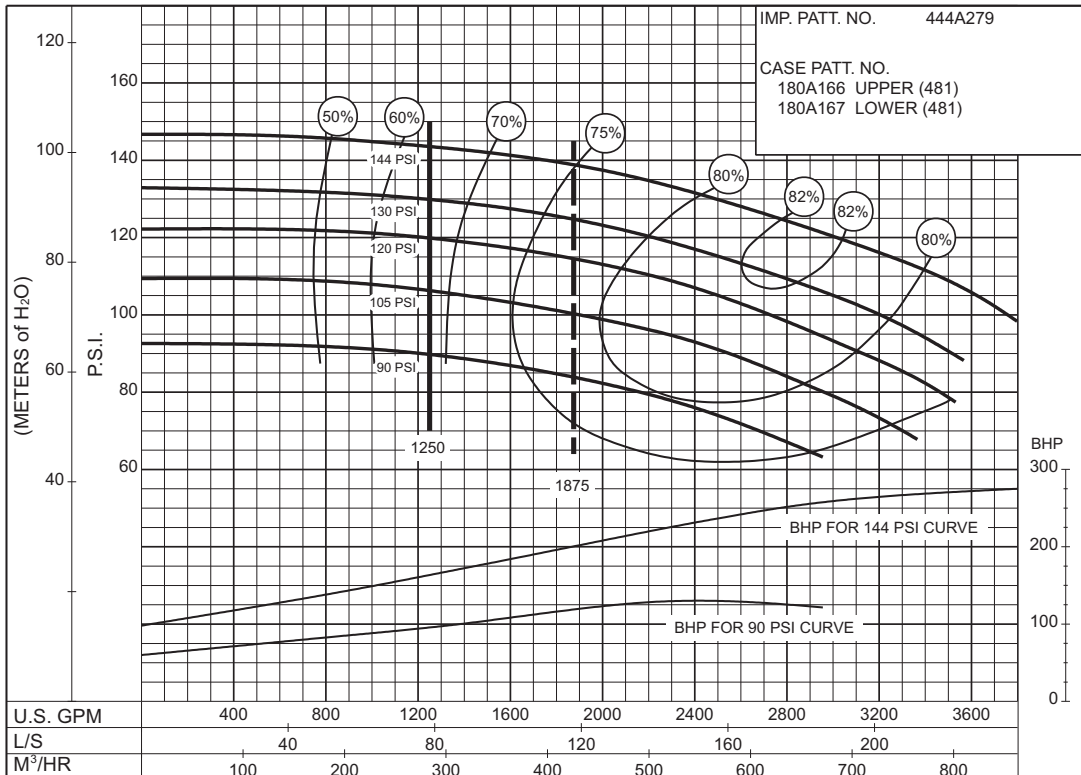
SIZE : 6" 1824CF / 6" 1844CF MODEL: 1800 IMPELLER : Enclosed R. P. M. : 1480



**78
to
106
P.S.I.**

PC-147578A

SIZE : 8" 1825F MODEL: 1800 IMPELLER : Enclosed R. P. M. : 1480



**90
to
144
P.S.I.**

PC-147576A

1500 G.P.M. 912 SERIES

50 HERTZ ELECTRIC MOTOR DRIVE

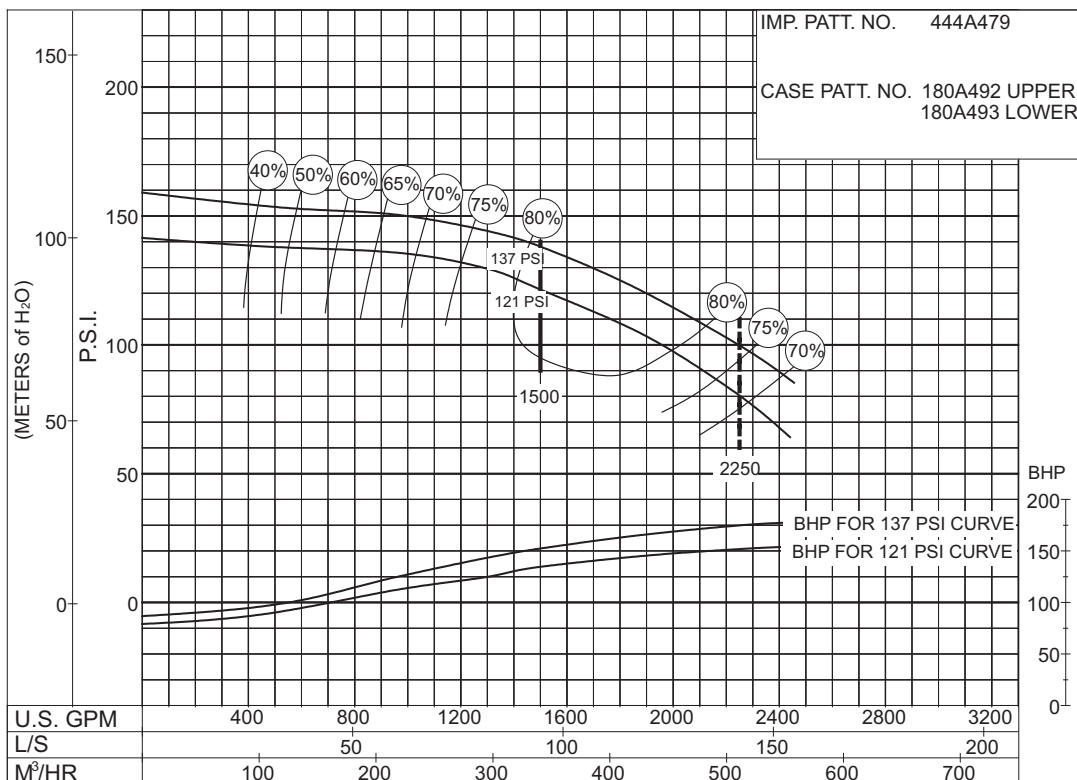
Section **912** Page **612.1**
 Date **June 2013**
 Supersedes **June 2007**

SIZE : 6" 1822HHF

MODEL: 1800

IMPELLER : Enclosed

R. P. M. : 2950



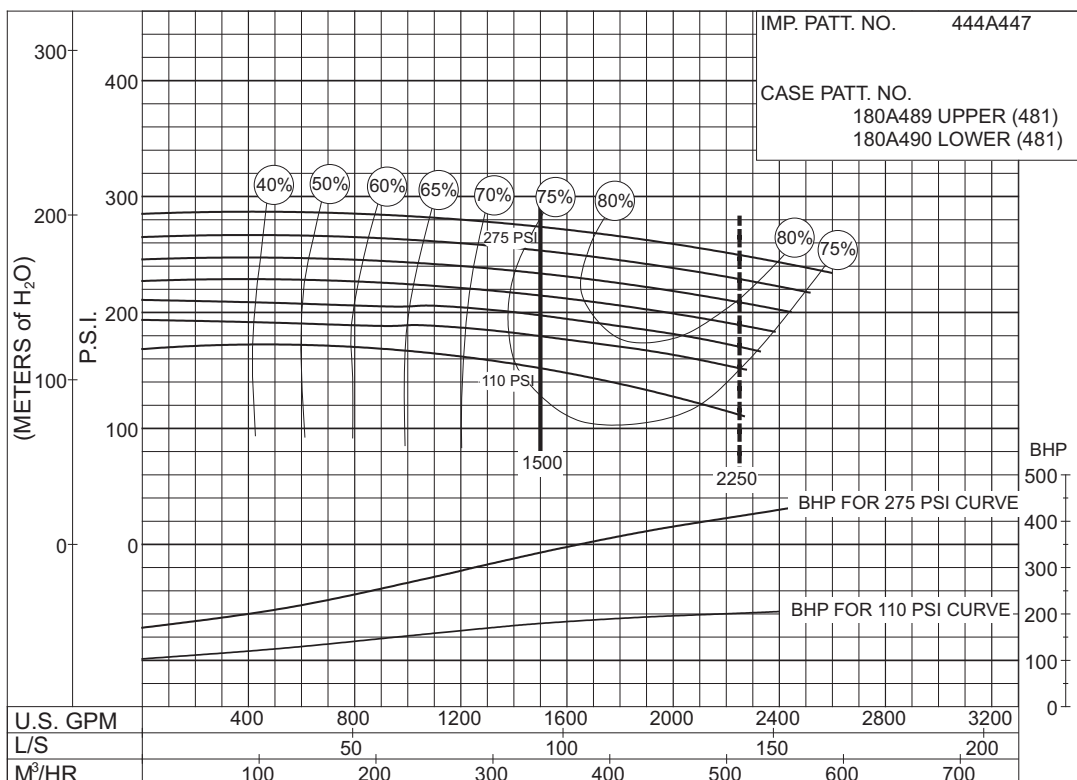
121 to 137 P.S.I.

SIZE : 6" 1823HHF

MODEL: 1800

IMPELLER : Enclosed

R. P. M. : 2950



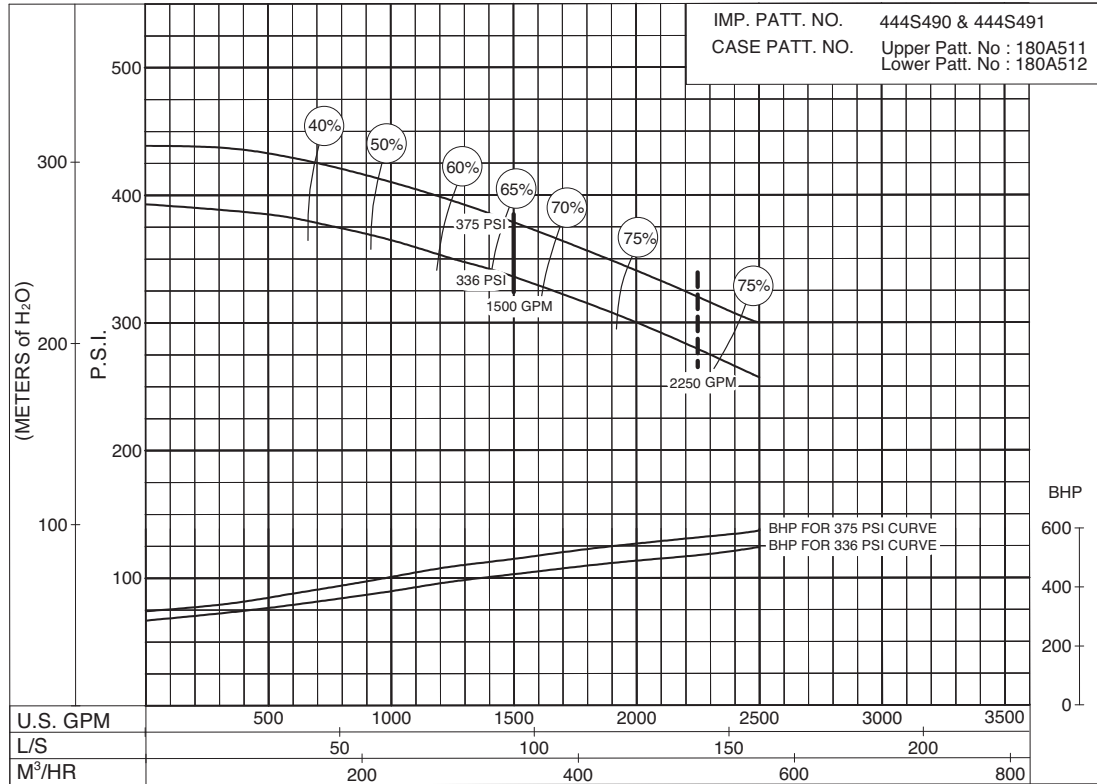
110 to 275 P.S.I.

1500 G.P.M. 912 SERIES
 50 HERTZ ELECTRIC MOTOR DRIVE

SIZE: 6"-1923F MODEL: 1900 IMPELLER : Enclosed R. P. M. : 2950

IMP. PATT. NO. 444S490 & 444S491
 CASE PATT. NO. Upper Patt. No : 180A511
 Lower Patt. No : 180A512

**336
to
375
P.S.I.**

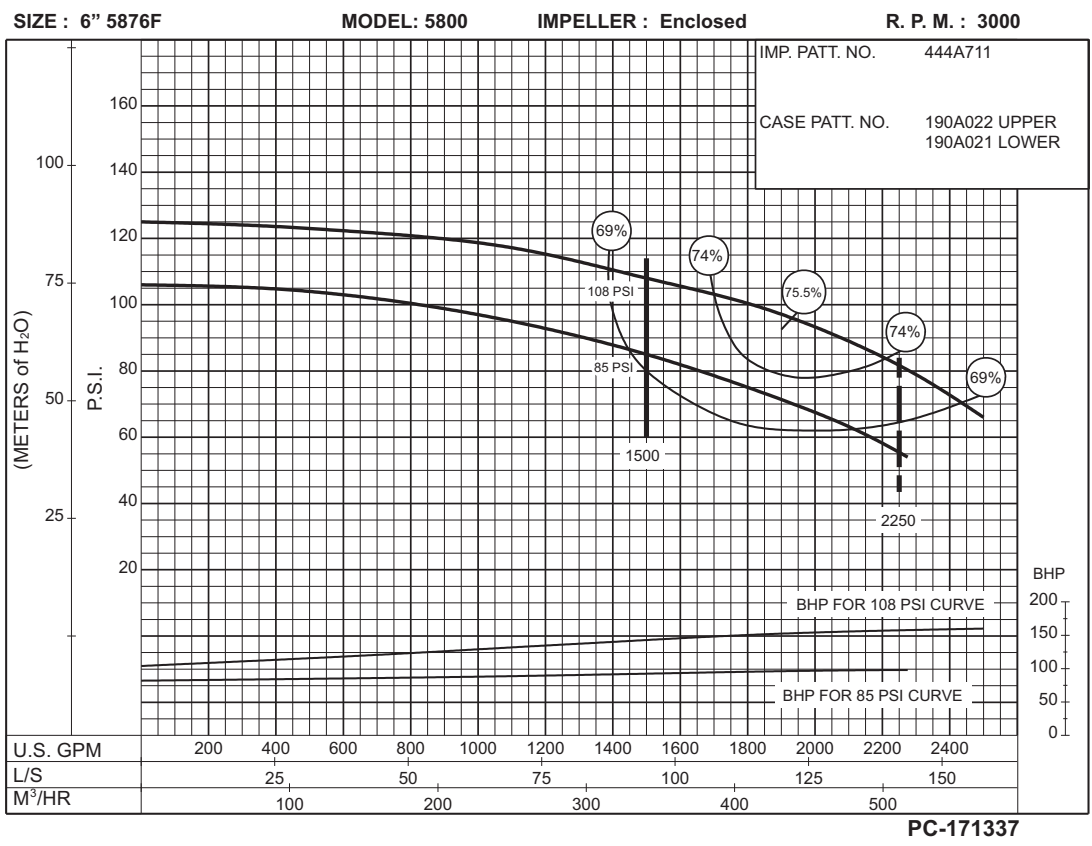
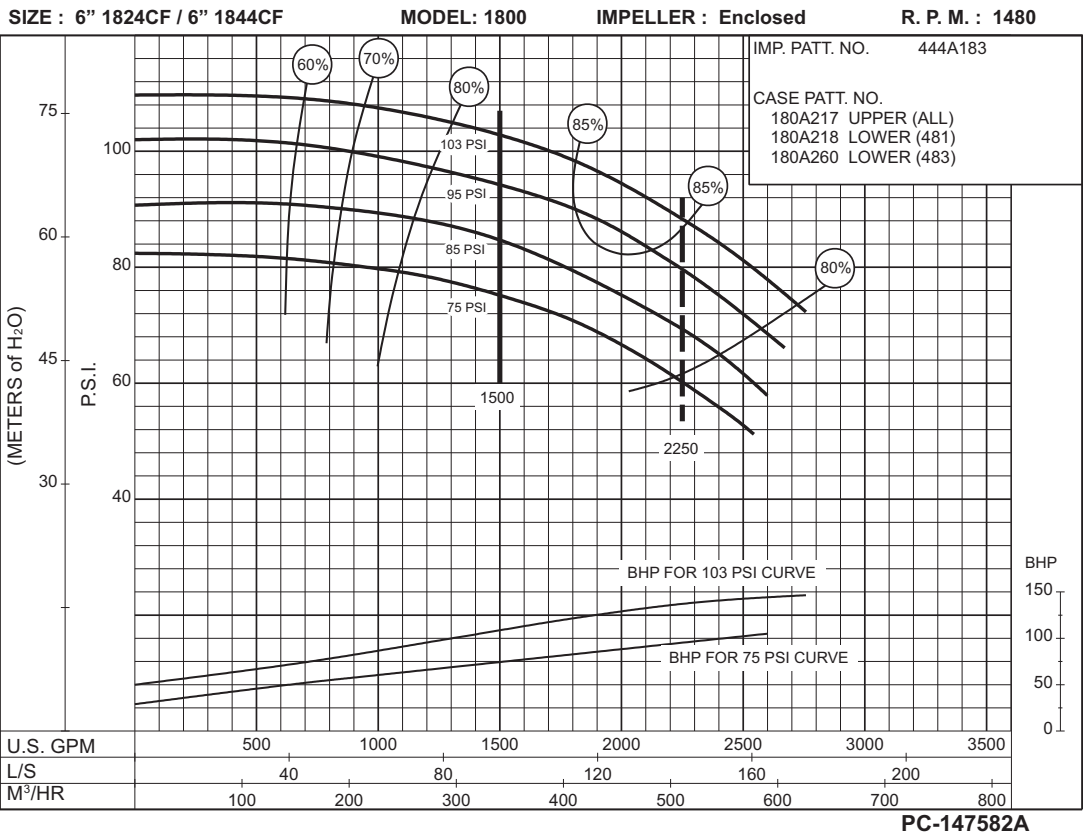


PC-200271A

1500 G.P.M. 912 SERIES

50 HERTZ ELECTRIC MOTOR DRIVE

Section **912** Page **613**
 Date **June 2013**
 Supersedes **April 2006**

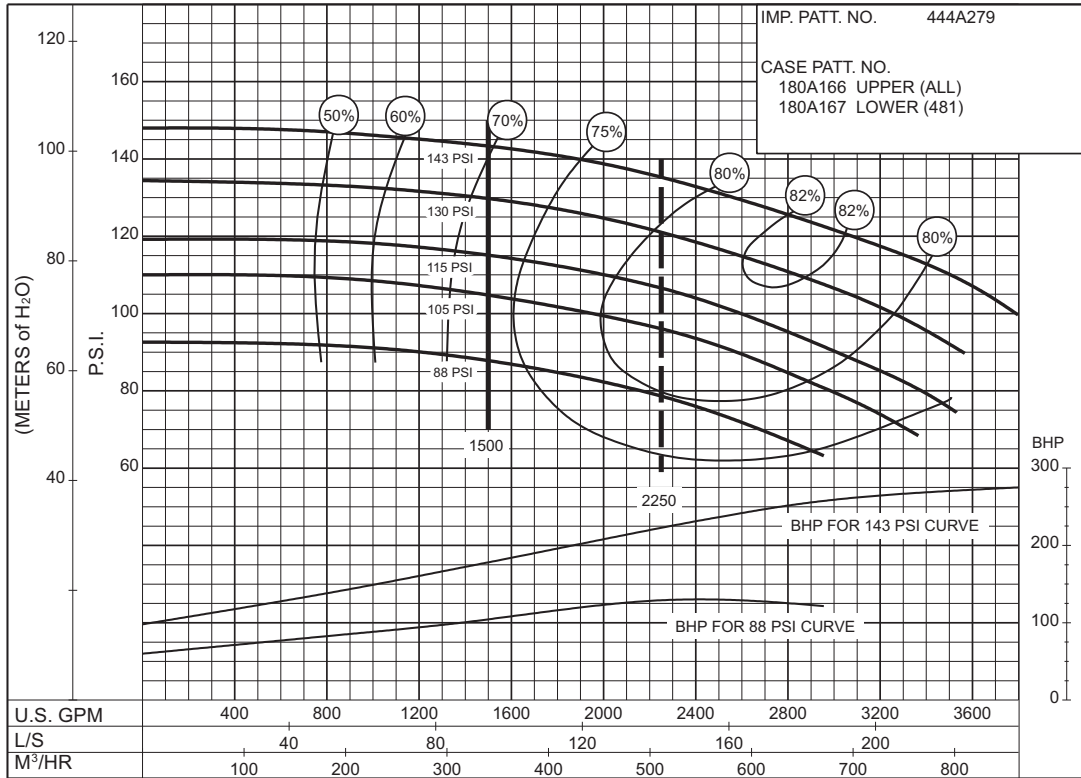


1500 G.P.M. 912 SERIES
 50 HERTZ ELECTRIC MOTOR DRIVE

SIZE : 8" 1825F MODEL: 1800 IMPELLER : Enclosed R. P. M. : 1480

IMP. PATT. NO. 444A279
 CASE PATT. NO.
 180A166 UPPER (ALL)
 180A167 LOWER (481)

**88
 to
 143
 P.S.I.**



PC-147580A

2000 G.P.M. 912 SERIES

50 HERTZ ELECTRIC MOTOR DRIVE

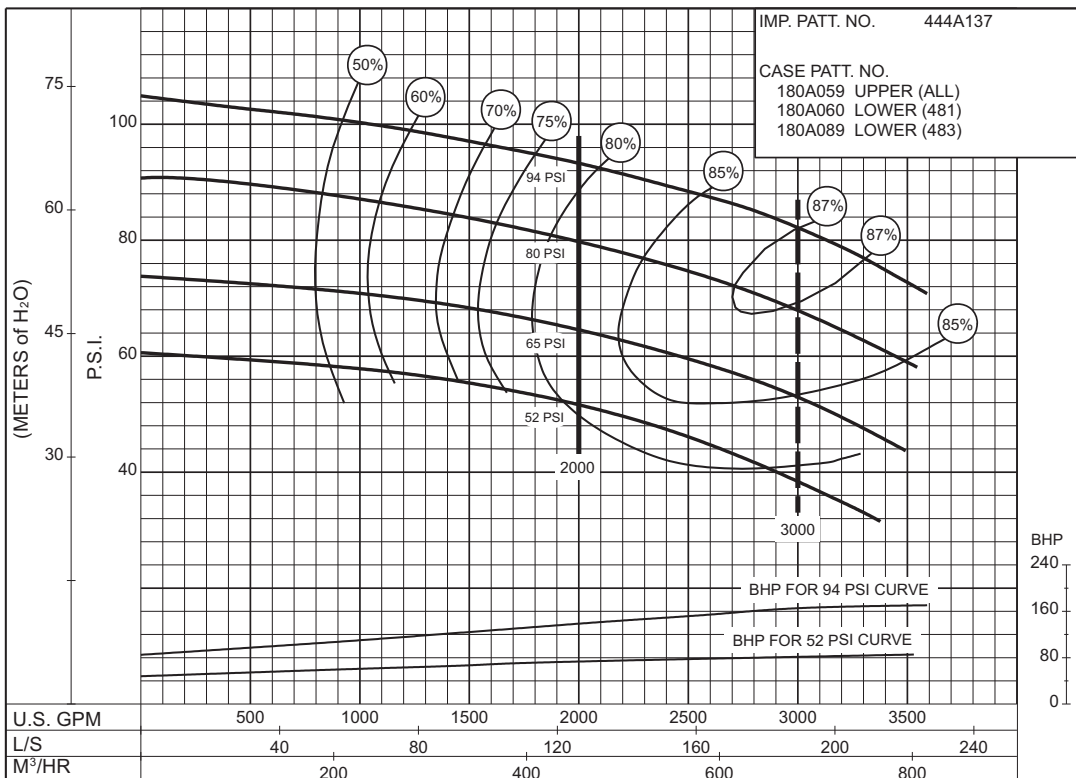
Section **912** Page **615**
 Date **June 2013**
 Supersedes **April 2006**

SIZE : 8" 1824BF / 8" 1844BF

MODEL: 480

IMPELLER : Enclosed

R. P. M. : 1480



**52
to
94
P.S.I.**

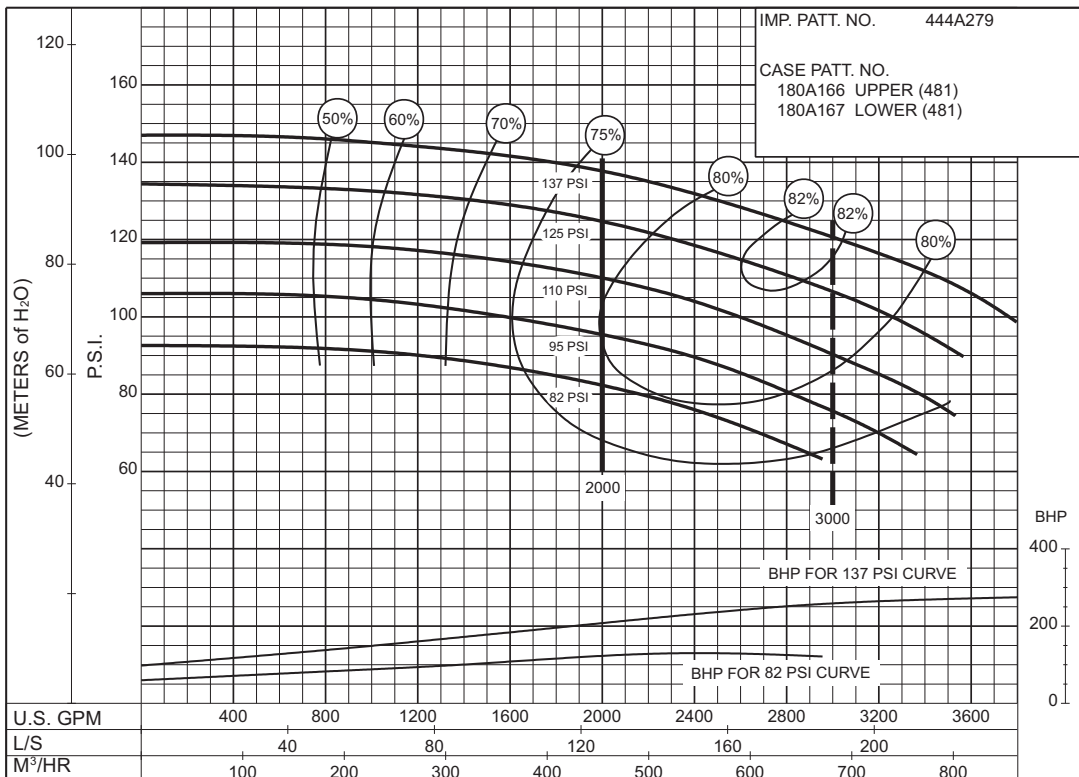
PC-147584A

SIZE : 8" 1825F

MODEL: 1800

IMPELLER : Enclosed

R. P. M. : 1480



**82
to
137
P.S.I.**

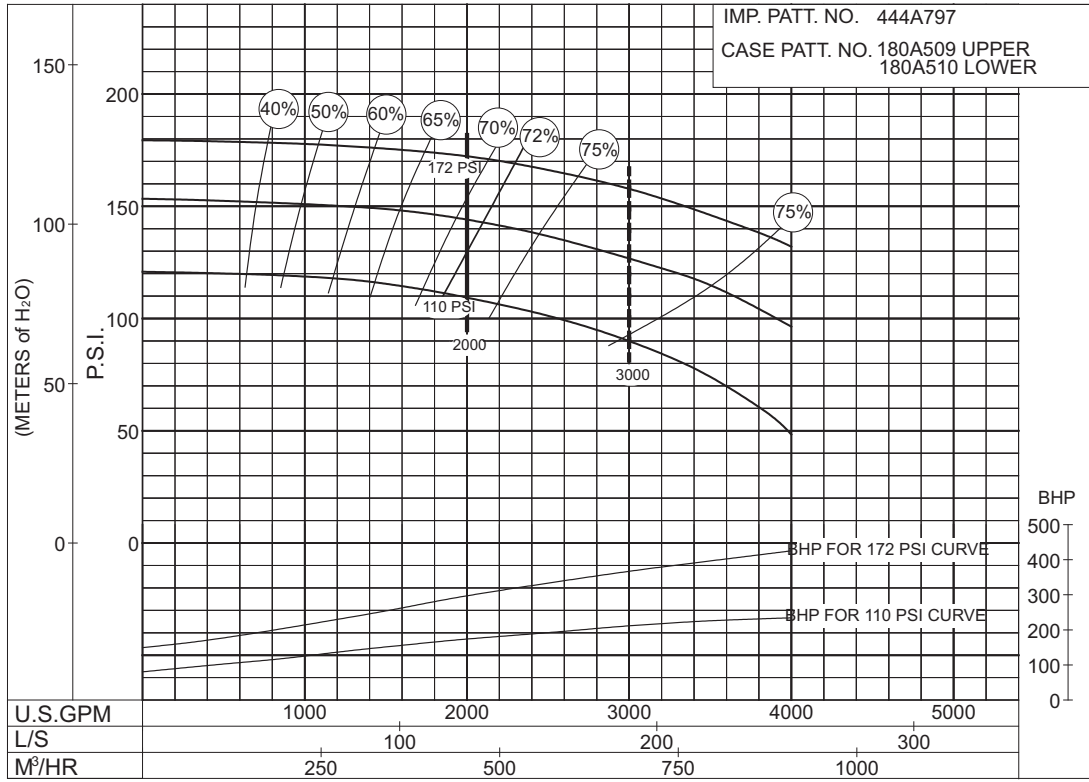
PC-147586A

2000 G.P.M. 912 SERIES
 50 HERTZ ELECTRIC MOTOR DRIVE

SIZE: 8"-1826F MODEL: 1820 TYPE : ELECTRIC IMPELLER : Enclosed R. P. M. : 1480

IMP. PATT. NO. 444A797
 CASE PATT. NO. 180A509 UPPER
 180A510 LOWER

**110
to
172
P.S.I.**

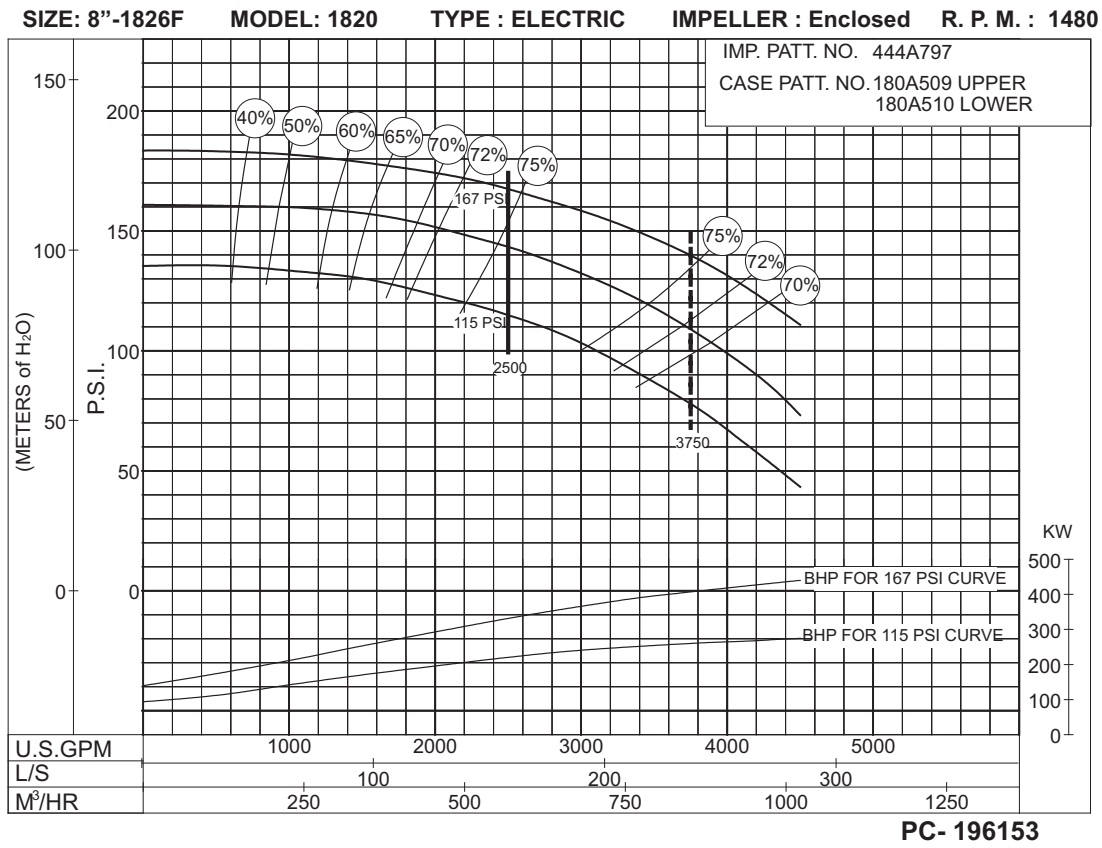
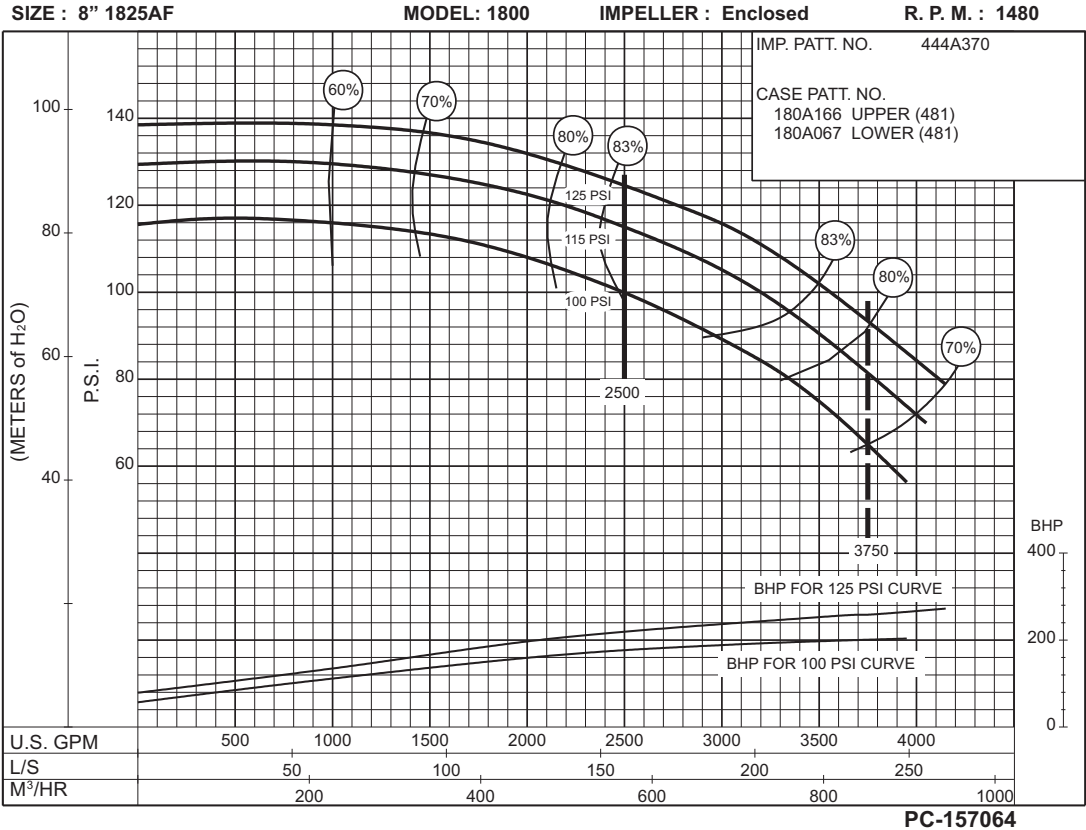


PC- 196149

2500 G.P.M. 912 SERIES

50 HERTZ ELECTRIC MOTOR DRIVE

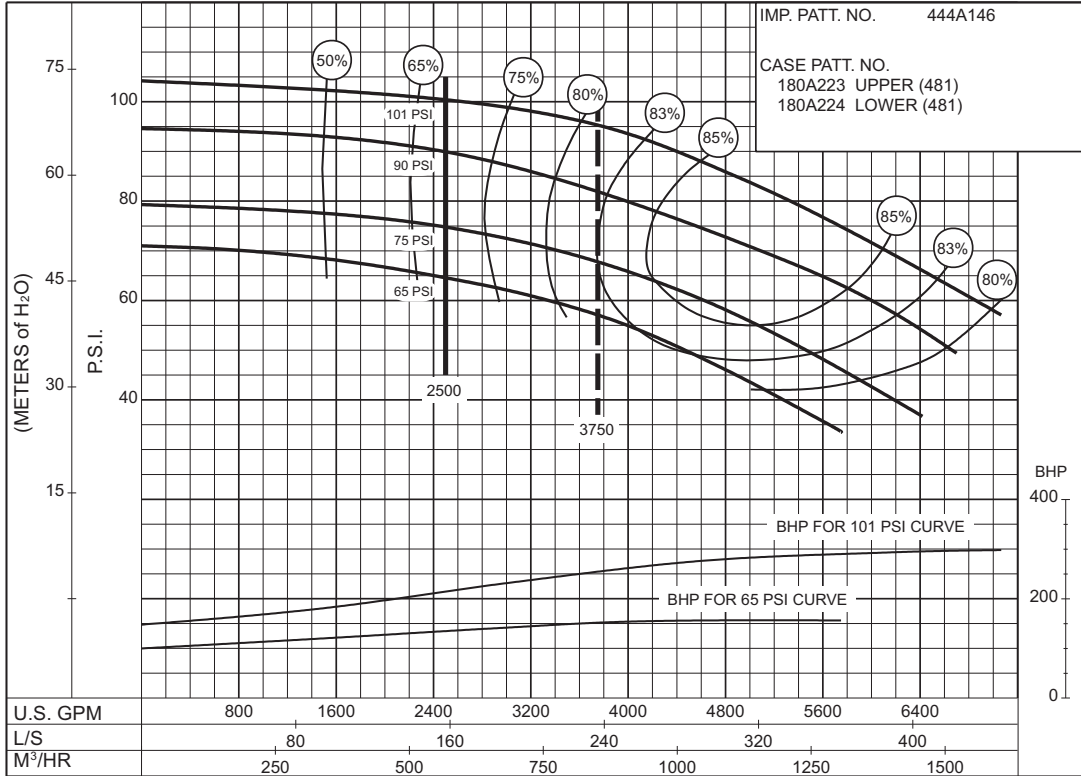
Section **912** Page **617**
 Date **June 2013**
 Supersedes **June 2008**



2500 G.P.M. 912 SERIES
 50 HERTZ ELECTRIC MOTOR DRIVE

SIZE : 10" 1824F MODEL: 1800 IMPELLER : Enclosed R. P. M. : 1480

IMP. PATT. NO. 444A146
 CASE PATT. NO.
 180A223 UPPER (481)
 180A224 LOWER (481)



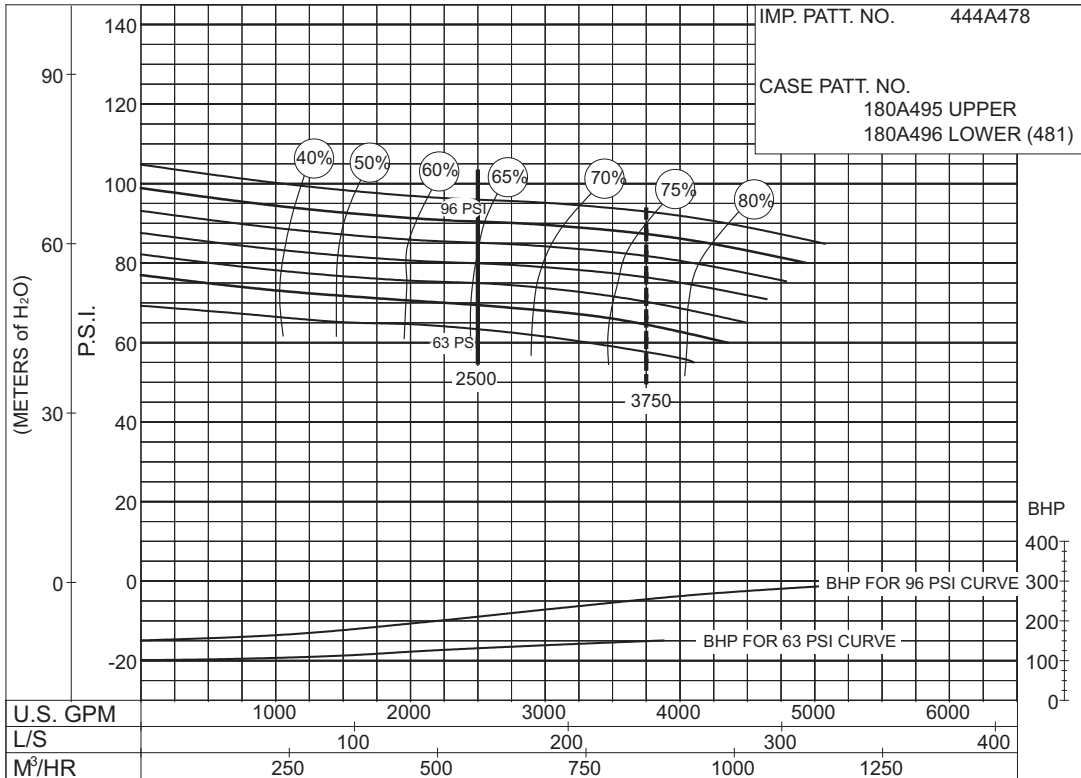
**65
to
101
P.S.I.**

PC-147588A

THIS PAGE LEFT INTENTIONALLY BLANK

2500 G.P.M. 912 SERIES
 50 HERTZ ELECTRIC MOTOR DRIVE

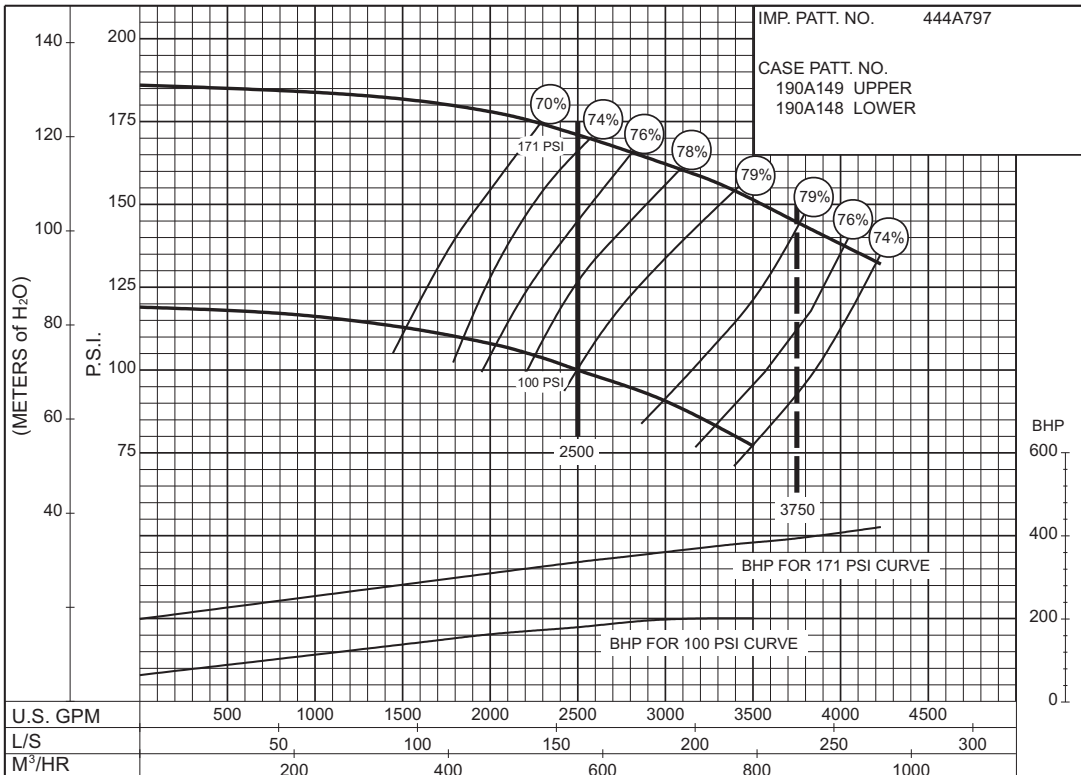
SIZE : 10" 1824DF MODEL: 1800 IMPELLER : Enclosed R. P. M. : 1480



63 to 96 P.S.I.

PC - 186080

SIZE : 8" 5826F MODEL: 5800 IMPELLER : Enclosed R. P. M. : 1480



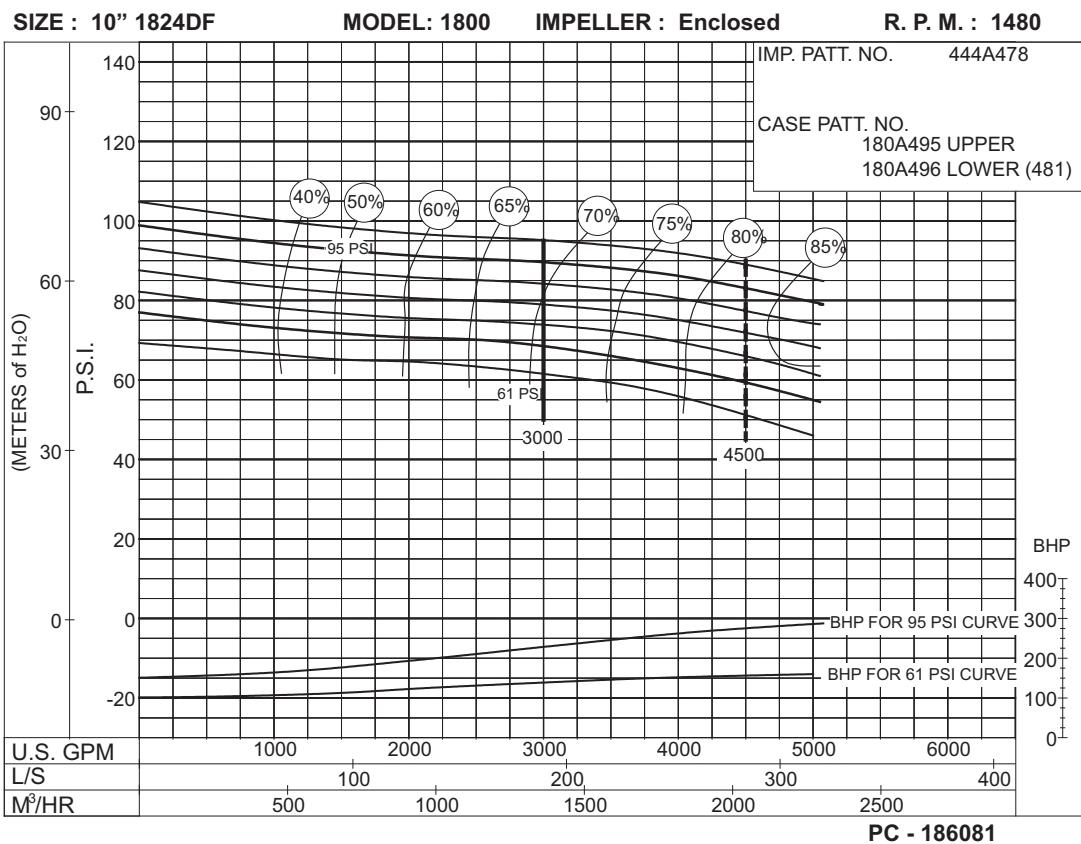
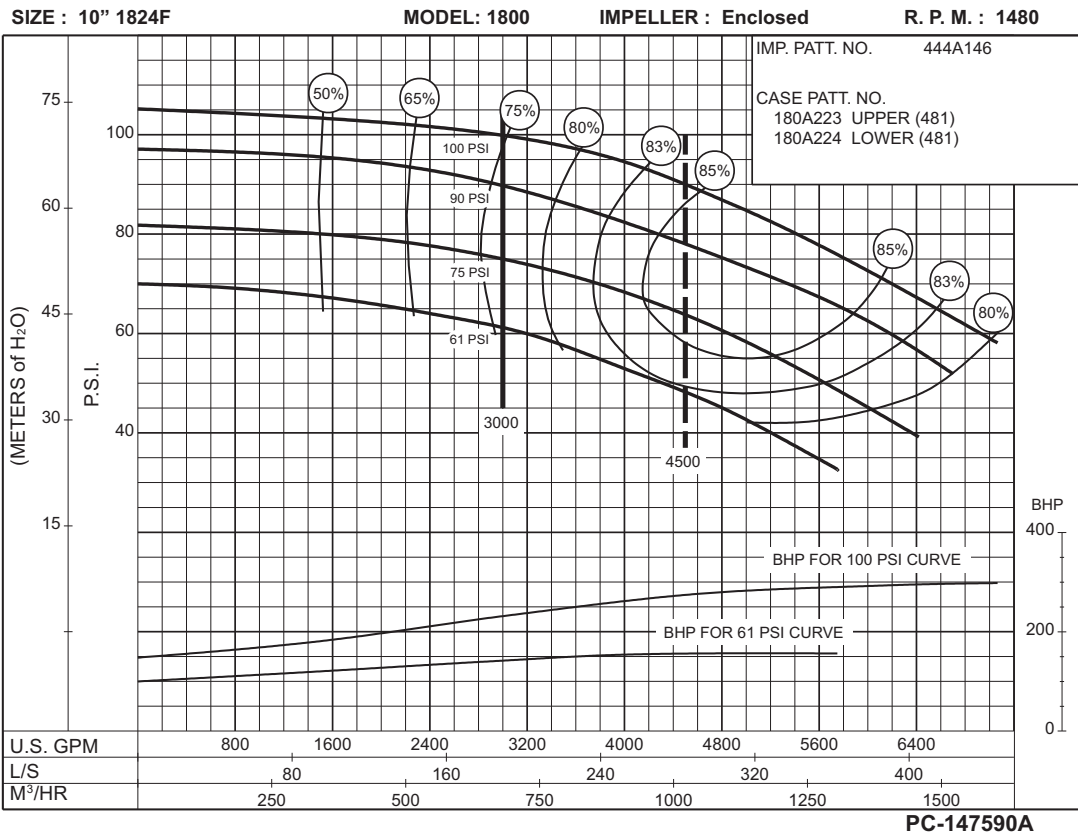
100 to 171 P.S.I.

PC-171301

3000 G.P.M. 912 SERIES

50 HERTZ ELECTRIC MOTOR DRIVE

Section **912** Page **619**
 Date **June 2013**
 Supersedes **April 2006**

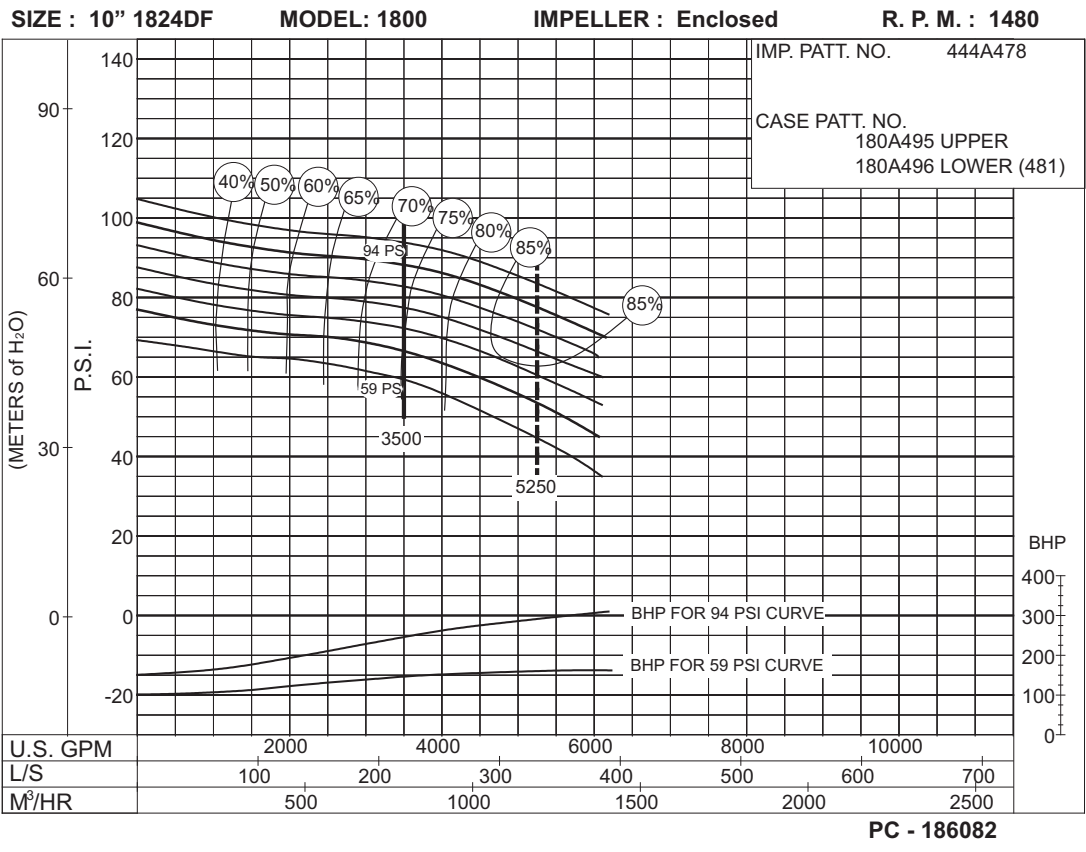
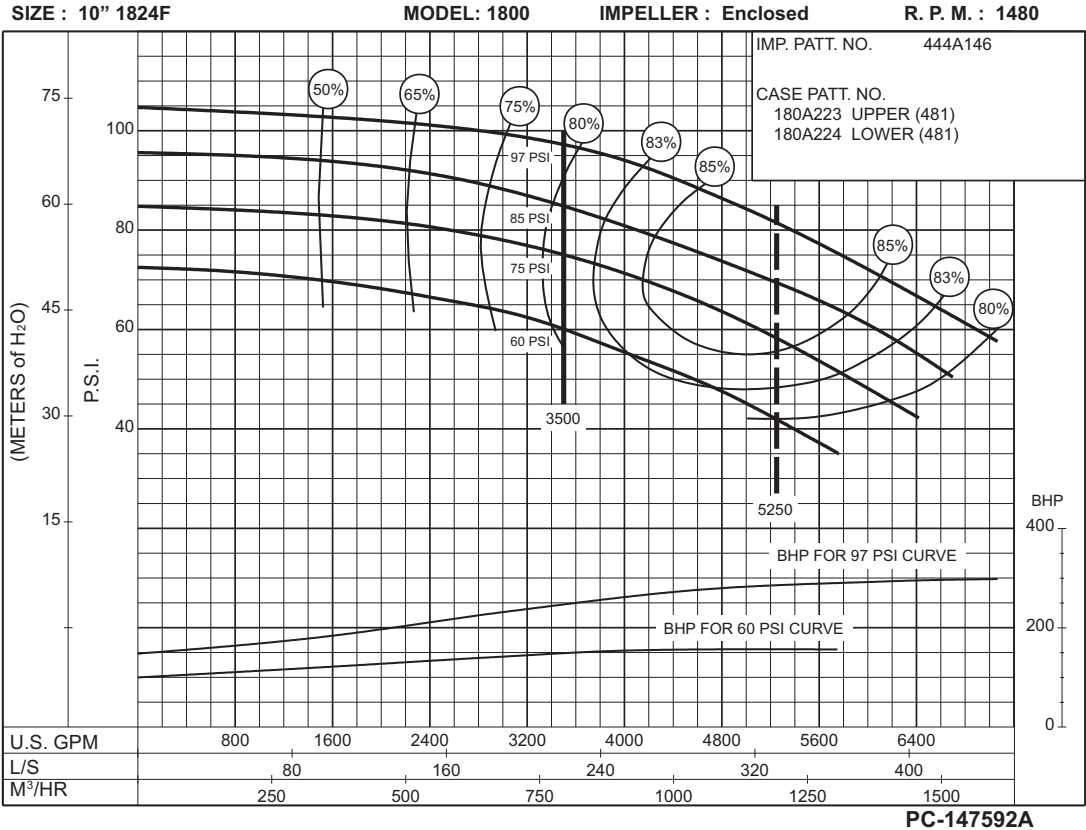


THIS PAGE LEFT INTENTIONALLY BLANK

3500 G.P.M. 912 SERIES

50 HERTZ ELECTRIC MOTOR DRIVE

Section **912** Page **621**
 Date **June 2013**
 Supersedes **April 2006**



THIS PAGE LEFT INTENTIONALLY BLANK

4000 G.P.M. 912 SERIES

50 HERTZ ELECTRIC MOTOR DRIVE

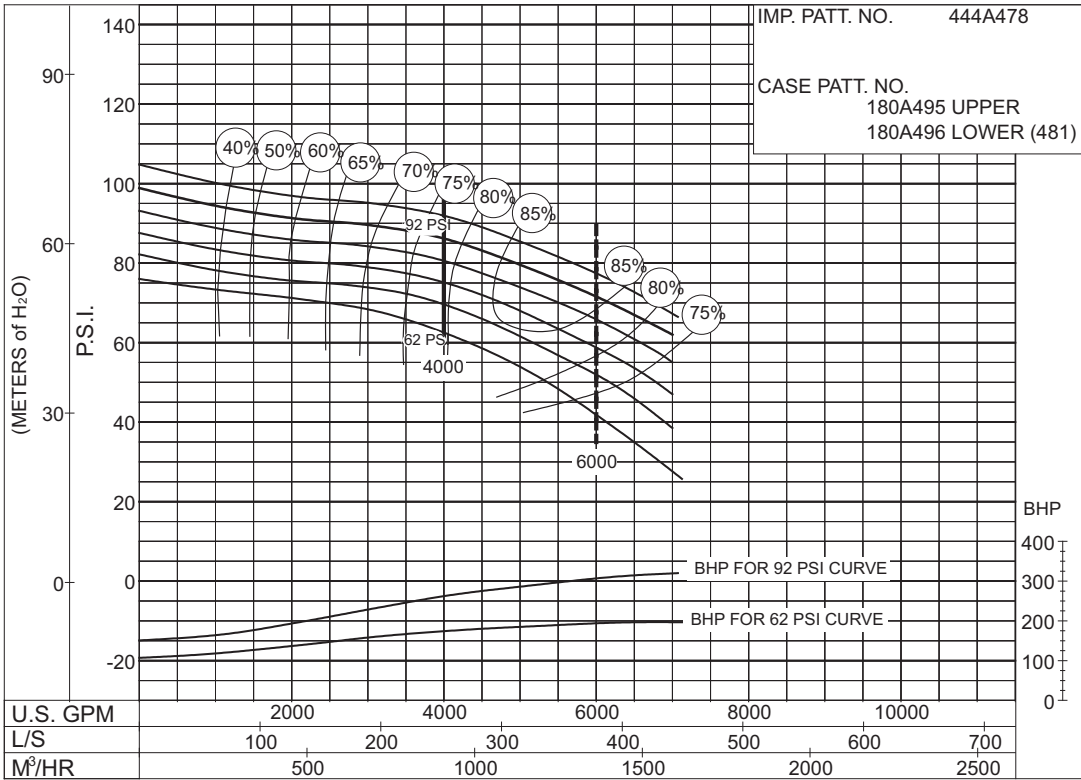
Section **912** Page **623**
 Date **June 2013**
 Supersedes **April 2006**

SIZE : 10" 1824DF

MODEL: 1800

IMPELLER : Enclosed

R. P. M. : 1480



PC - 186083

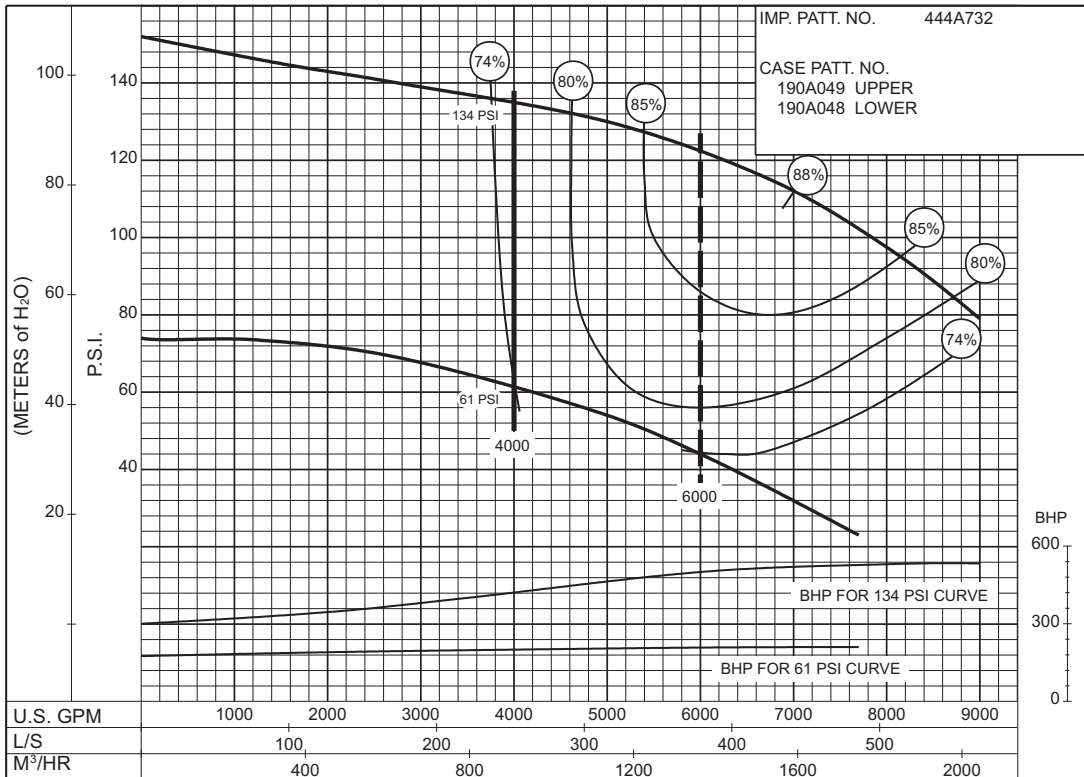
62 to 92 P.S.I.

SIZE : 10" 2825AF

MODEL: 2800

IMPELLER : Enclosed

R. P. M. : 1480



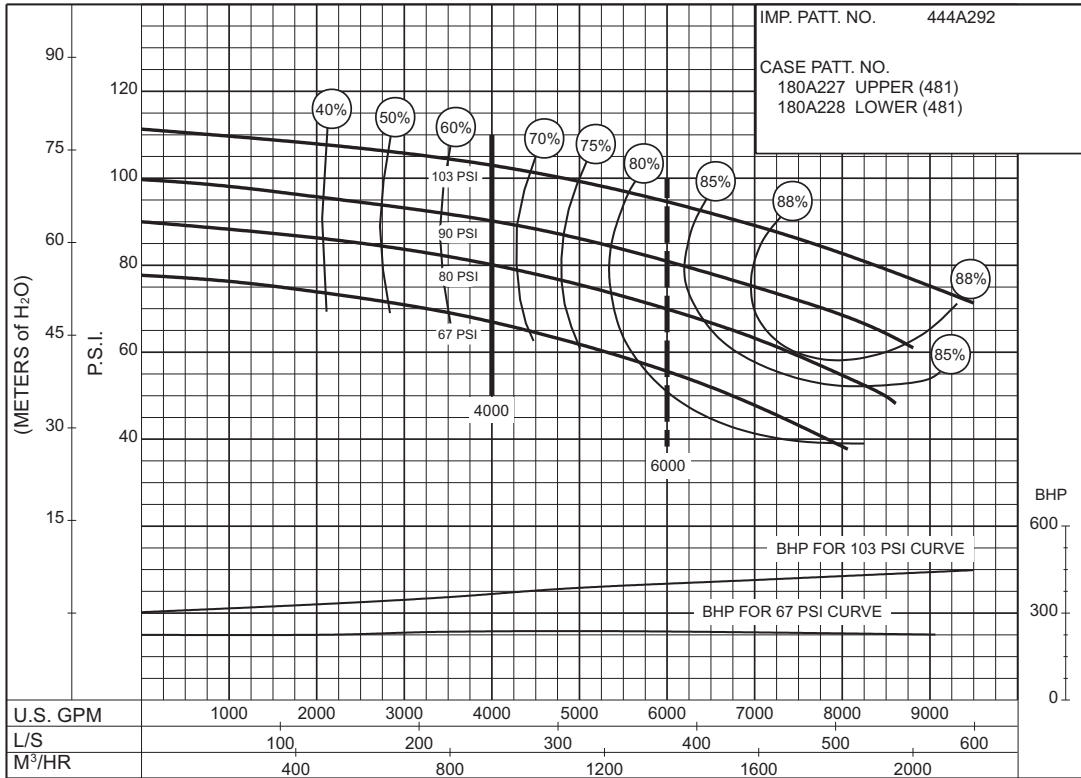
PC-171199

61 to 134 P.S.I.

4000 G.P.M. 912 SERIES
 50 HERTZ ELECTRIC MOTOR DRIVE

SIZE : 12" 1824AF MODEL: 1800 IMPELLER : Enclosed R. P. M. : 1480

IMP. PATT. NO. 444A292
 CASE PATT. NO.
 180A227 UPPER (481)
 180A228 LOWER (481)



**67
to
103
P.S.I.**

PC-147594A

4500 G.P.M. 912 SERIES

50 HERTZ ELECTRIC MOTOR DRIVE

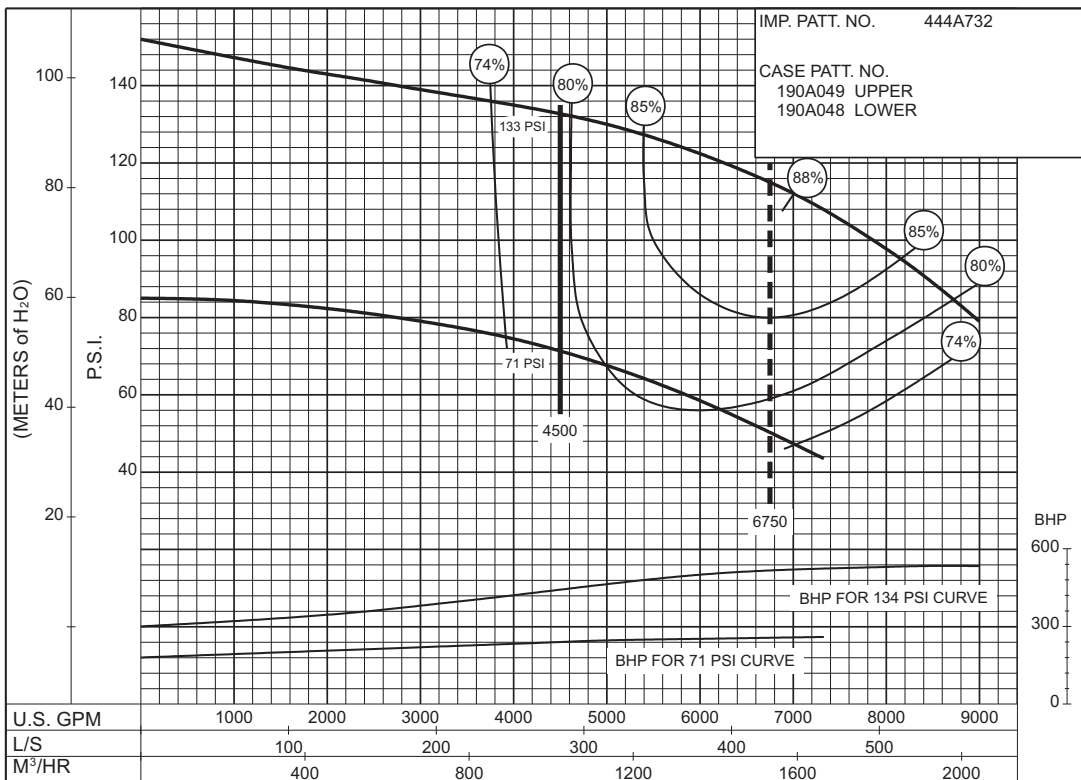
Section **912** Page **625**
 Date **June 2013**
 Supersedes **April 2006**

SIZE : 10" 2825AF

MODEL: 2800

IMPELLER : Enclosed

R. P. M. : 1480



71
to
133
P.S.I.

PC-171200

THIS PAGE LEFT INTENTIONALLY BLANK

5000 G.P.M. 912 SERIES

50 HERTZ ELECTRIC MOTOR DRIVE

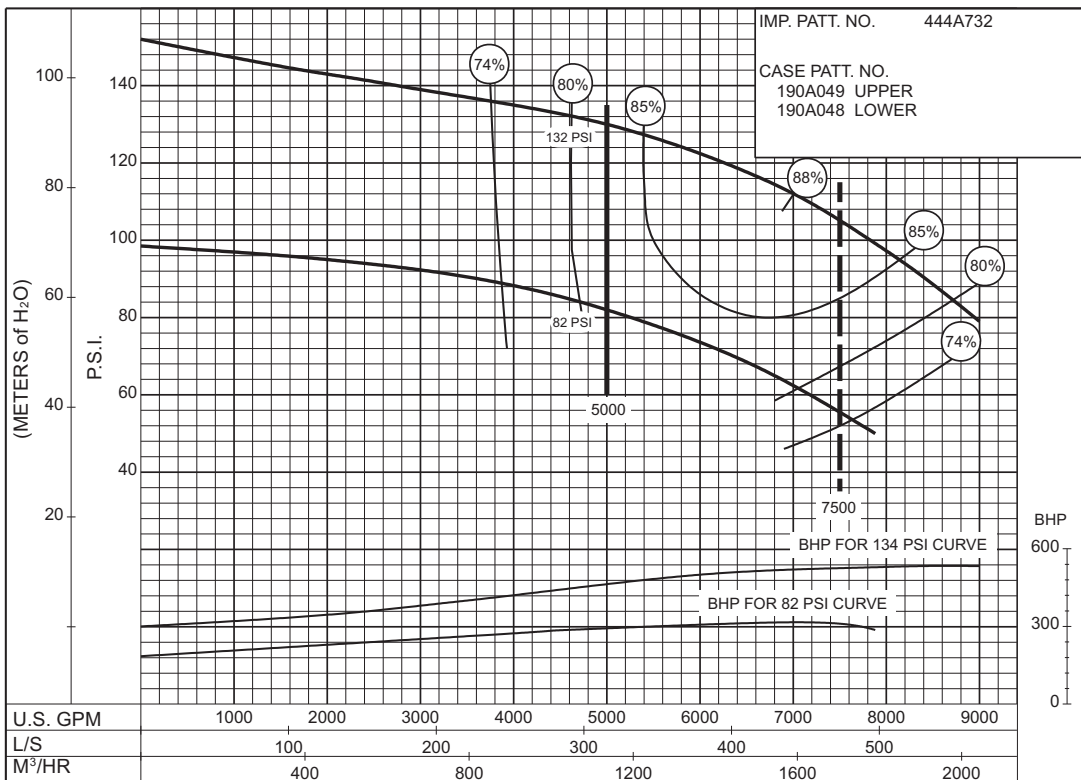
Section **912** Page **627**
 Date **June 2013**
 Supersedes **April 2006**

SIZE : 10" 2825AF

MODEL: 2800

IMPELLER : Enclosed

R. P. M. : 1480



82
to
132
P.S.I.

PC-171201

THIS PAGE LEFT INTENTIONALLY BLANK