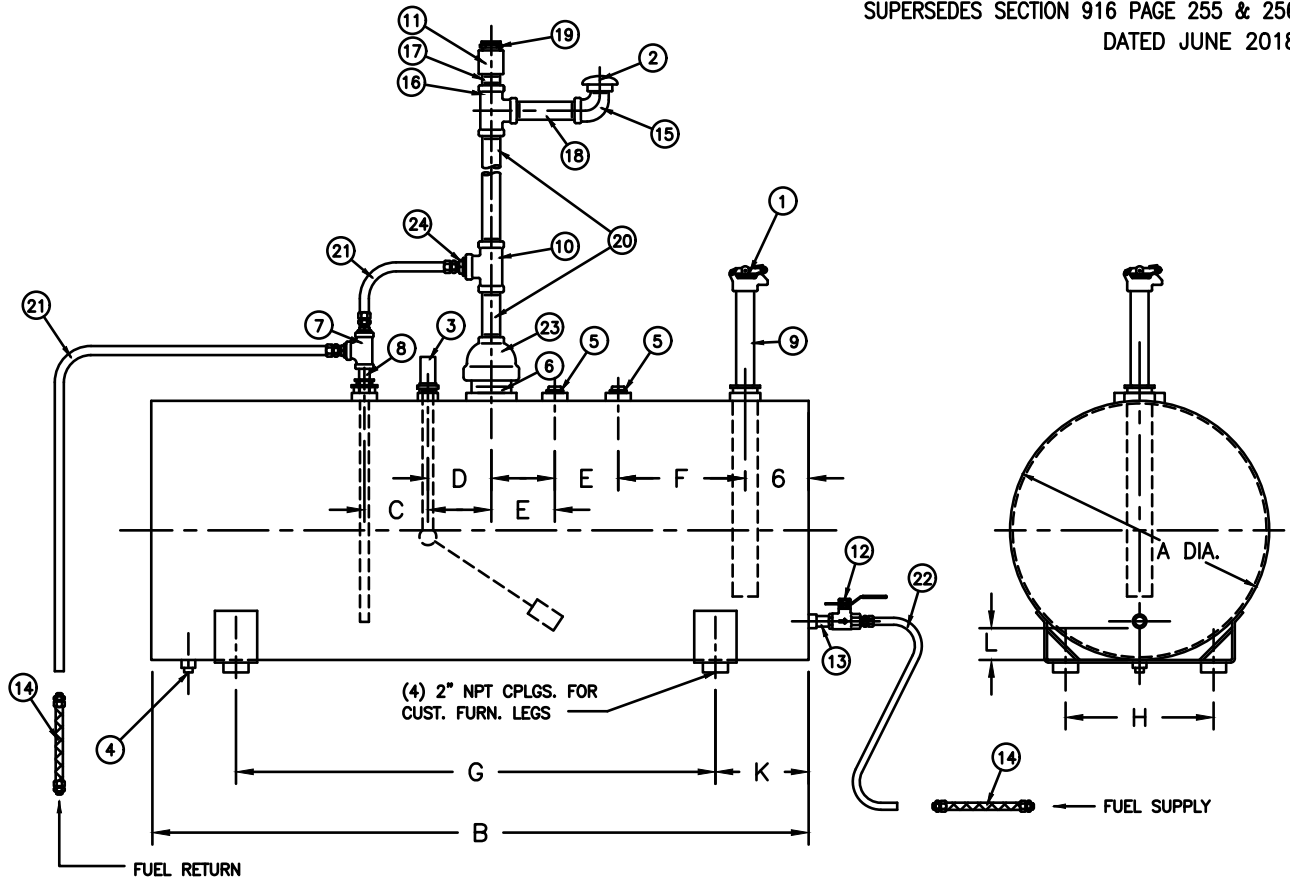


FAIRBANKS NIJHUIS FIRE PUMPS
SINGLE WALL FUEL TANKS WITH STANDARD FITTINGS

SECTION 916 PAGE 255
DATED SEPTEMBER 2022
SUPERSEDES SECTION 916 PAGE 255 & 256
DATED JUNE 2018



NOMINAL TANK SIZE IN GALLONS	USABLE VOLUME IN GALLONS	A	B	C	D	E	F	G	H	K	L	Z
61	55	20 (508)	45 (1143)	6 (152)	6 (152)	6 (152)	9 (229)	27 (686)	12 (305)	9 (229)	1.9 (48)	2" NPT
119	105	24 (610)	61 (1549)	6 (152)	6 (152)	6 (152)	13 (330)	44 (1118)	14 (356)	8.5 (216)	2.4 (60)	3" NPT
187	165	30 (762)	61 (1549)	6 (152)	6 (152)	6 (152)	13 (330)	44 (1118)	16 (406)	8.5 (216)	3 (76)	3" NPT
231	210	34 (864)	59 (1499)	6 (152)	6 (152)	6 (152)	11 (279)	44 (1118)	23 (584)	7.5 (191)	3.4 (86)	3" NPT
300	270	38 (965)	61 (1549)	6 (152)	6 (152)	6 (152)	13 (330)	44 (1118)	23 (584)	8.5 (216)	3.8 (95)	3" NPT
359	320	38 (965)	73 (1854)	6 (152)	6 (152)	6 (152)	25 (635)	44 (1118)	23 (584)	14.5 (368)	3.8 (95)	4" NPT
451	410	45 (1143)	65.5 (1664)	6 (152)	6 (152)	6 (152)	17.5(445)	44 (1118)	30 (762)	10.75(273)	4.4 (111)	4" NPT
572	515	48 (1219)	73 (1854)	6 (152)	6 (152)	6 (152)	25 (635)	44 (1118)	30 (762)	14.5 (368)	4.8 (121)	4" NPT
704	640	60 (1524)	58 (1473)	6 (152)	6 (152)	6 (152)	10 (254)	44 (1118)	30 (762)	7 (178)	5.9 (149)	4" NPT
849	766	64 (1626)	61 (1549)	6 (152)	6 (152)	6 (152)	13 (330)	44 (1118)	30 (762)	8.5 (216)	6.3 (159)	4" NPT
978	880	64 (1626)	70 (1778)	6 (152)	6 (152)	6 (152)	22 (559)	44 (1118)	30 (762)	13 (330)	6.3 (159)	4" NPT
1100	993	64 (1626)	79 (2007)	6 (152)	6 (152)	6 (152)	31 (787)	44 (1118)	30 (762)	17.5 (445)	6.3 (159)	6" NPT

COMPONENTS FURNISHED BY PENTAIR		
ITEM NO.	QTY. REQ'D	DESCRIPTION
1	1	2" NPT LOCKABLE FUEL CAP
2	1	2" NPT SCREENED TANK VENT
3	1	FUEL GAUGE 1 1/2" NPT
4	1	1" NPT DRAIN PLUG
5	2	2" NPT PIPE PLUG
6	1	4" NPT CLOSE NIPPLE 6" NPT CLOSE NIPPLE (1100 GAL ONLY)
7	1	1/2" NPT TEE
8	1	1/2" NPT CLOSE NIPPLE
9	1	2" FUEL FILL BLACK PIPE
10	1	"Z"x"Z"x2" NPT TEE
11	1	"Z" NPT PIPE COUPLING
12	1	3/4" NPT LOCKABLE FUEL VALVE
13	1	3/4" NPT CLOSE NIPPLE
14	2	FUEL HOSES FOR SUPPLY & RETURN (FURNISHED BY ENGINE MFR.)
15	1	2" NPT STREET ELBOW
16	1	"Z"x"Z"x2" NPT TEE
17	1	"Z" NPT CLOSED NIPPLE
18	1	2" NPT X 6" LONG NIPPLE
19	1	"Z" NPT EMERGENCY VENT
23	1	4"xZ" NPT REDUCER 6"xZ" NPT REDUCER (1100 GAL ONLY)
24	1	2"x1/2" NPT REDUCER

COMPONENTS FURNISHED BY OTHERS		
ITEM NO.	QTY. REQ'D	DESCRIPTION
20	1	"Z" SIZE PIPING FOR VENT
21	1	1/2" TUBING AND FITTINGS OR 1/2" BLACK PIPE
22	1	3/4" TUBING AND FITTINGS OR 3/4" BLACK PIPE

DIESEL FUEL TANK NOTES:

- TANKS ARE CONSTRUCTED AND LABELED IN ACCORDANCE WITH UL-142.
- FITTINGS SHOWN ARE CONSISTENT WITH N.F.P.A. 30 AND UL-142.
- TANK TO BE PITCHED TOWARD DRAIN 1/4" PER FOOT WITH OUTLET ON THE SAME ELEVATION AS ENGINE FUEL PUMP. MEANS OF ELEVATING TANK (BY OTHERS) MAY BE REQUIRED.
- USABLE TANK VOLUME IS TOTAL CAPACITY LESS 5% FOR SUMP AND LESS 5% FOR EXPANSION.

ILLUSTRATION NOTES:

- ALL DIMENSIONS ARE IN INCHES (mm) AND MAY VARY ±.25" (6mm).
- COMPONENTS SHOWN ARE SHIPPED LOOSE FOR FIELD ASSEMBLY.
- ILLUSTRATION IS FOR COMPONENT IDENTIFICATION ONLY. ACTUAL INSTALLATION MUST MEET LOCAL CODES AND ALL APPLICABLE STANDARDS.
- REFER TO SECTION 916 PAGE 259 FOR DETAILS OF PENTAIR FURNISHED COMPONENTS.

