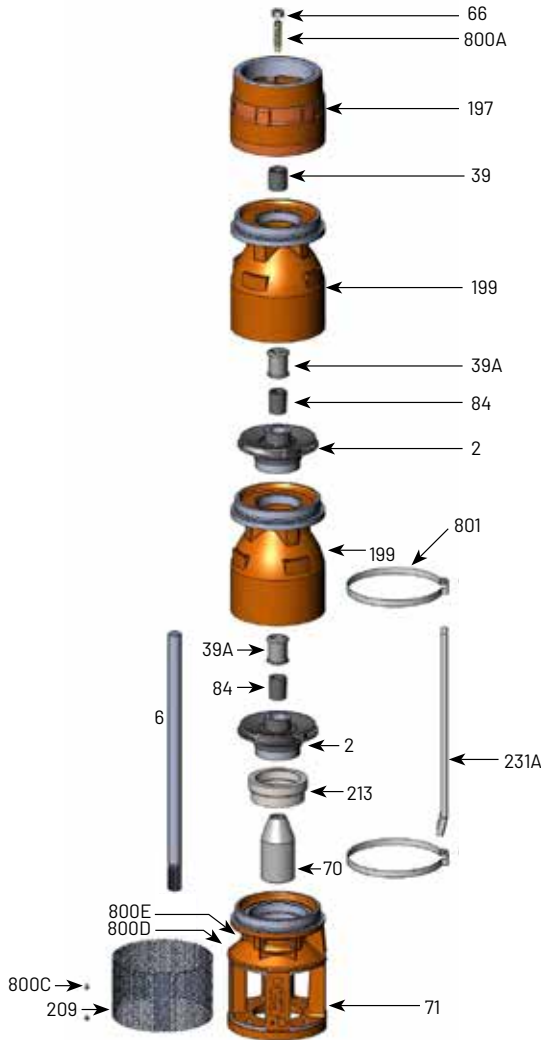


7TMH SERIES

350 GPM, 60HZ, NPT, 8" MOTORS

Section	ST-7TMH
Page	1.0
Date	June 1, 2018
Supersedes	March 1, 2016


TABLE 1 – 7TMH-350 Common Parts Group

Item Number	Part Number	Description	Required Qty
2	See Table 3	Impeller	1 Per Stage
6	See Table 4	Shaft	1
39	M15886	Vesconite Bearing	1
39A	S13636	Neoprene Bearing	1 Per Stage
66	M15881	Upthrust Nut, 1/2-13 LH	1
70	B87061	8" Motor Coupling	1
71	M16573	7TMH 8" Motor Suction Bracket*	1
84	S05301	1" Collet	1 Per Stage
197	M16387	7TMH discharge 5 x 6 NPT	1
199	B86969	7TMH-350 Bowl (incl. Neoprene Bearing)	1 Per Stage
209	M16578	Suction Screen	1
213	M16627	Insert 7TMH-350 8" Suction Bracket	1
231A	M10252	Cable Guard, 8" material	1
800A	M15882	Upthrust Screw, 1/2-13 LH	1
800C	M15937	Screen Screw, 8-32 x 3/8 Panhead	2
800D	M10199	Rivet, 3/32	2
800E	M09653	Nameplate	1
801	M10102	7TMH Cable Guard Clamp	2
Not Illustrated	M09970	Tag, Upthrust Adjustment	1
Not Illustrated	B87159	Bolt Kit, 8" Motor	1
Not Illustrated	BE972	Owner's Manual	1

Note 1: B86886 includes items 39, 66, 197, 800A

Note 2: B86969 includes 71 and 213

TABLE 2 – Additional Staging

Item Number	Part Number	Description	Required Qty
39A	S13636	Neoprene Bearing	1 Per Stage
	S10708	Bronze Bearing	
199	B86969	7TMH-350 Bowl (incl. Neoprene Bearing)	1 Per Stage
84	S05301	1" Collet	1 Per Stage
2	See Table 3	Impeller	1 Per Stage

Note 3: Bronze bearing may be used in place of the standard Neoprene Bearing.

TABLE 3

Item Number	Part Number	Description	Required Qty
2	M16624	7TMH-350 "A" Impeller 5.736"	See Table 4

TABLE 4 – 60 Hz Staging Requirements Build Table

Series	HP/kW	Stages	Trim	416 SS shaft		Ion-nitride shaft		Shaft Length (in/mm)	Cable Guard Length ⁷	Assembled pump length (motor not included)
			"A"	Pump catalog number	416 SS Shaft p/n ⁶	Pump catalog number	Ion Nitride Shaft p/n ⁶			
7TMH40-350	40/29.8kW	4	4	B87015	M16689	B87015N	M16689N	39.25 in/996.95 mm	36.5 in/927.1 mm	44.75 in/1137 mm
7TMH50-350	50/37.3kW	5	5	B87016	M16690	B87016N	M16690N	47.25 in/1200.15 mm	43.5 in/1104.9 mm	52.75 in/1340 mm
7TMH60-350	60/44.7kW	6	6	B87017	M16099	B87017N	M16132	55.25 in/1403.35 mm	52.5 in/1333.5 mm	60.75 in/1544 mm
7TMH75-350	75/55.9kW	7	7	B87018	M16841	B87018N	M16843	63.25 in/1606.55 mm	60.5 in/1536.7 mm	69.87 in/1775 mm
7TMH100-350	100/74.6kW	10	10	B87019	M16842	B87019N	M16844	87.25 in/2216.15 mm	84.5 in/2146.3 mm	93.87 in/2385 mm

Note 4: effective assembled pump diameter with cable guard lying flat against pump is 7.5 inches

Note 5: 6" and 8" pumps use the same shafts.

Note 6: Cable guard M10252 sold in 8' (2.44M) lengths only